

Rijnwaalpad



14th of september, 2016

www.velo-city2017.com

The challenge

- Two separate cities in 1950 (Arnhem en Nijmegen);
- Rapid urbanization since;
- An urban region in 2016;
- (Mobility) Challenges on a regionale scale



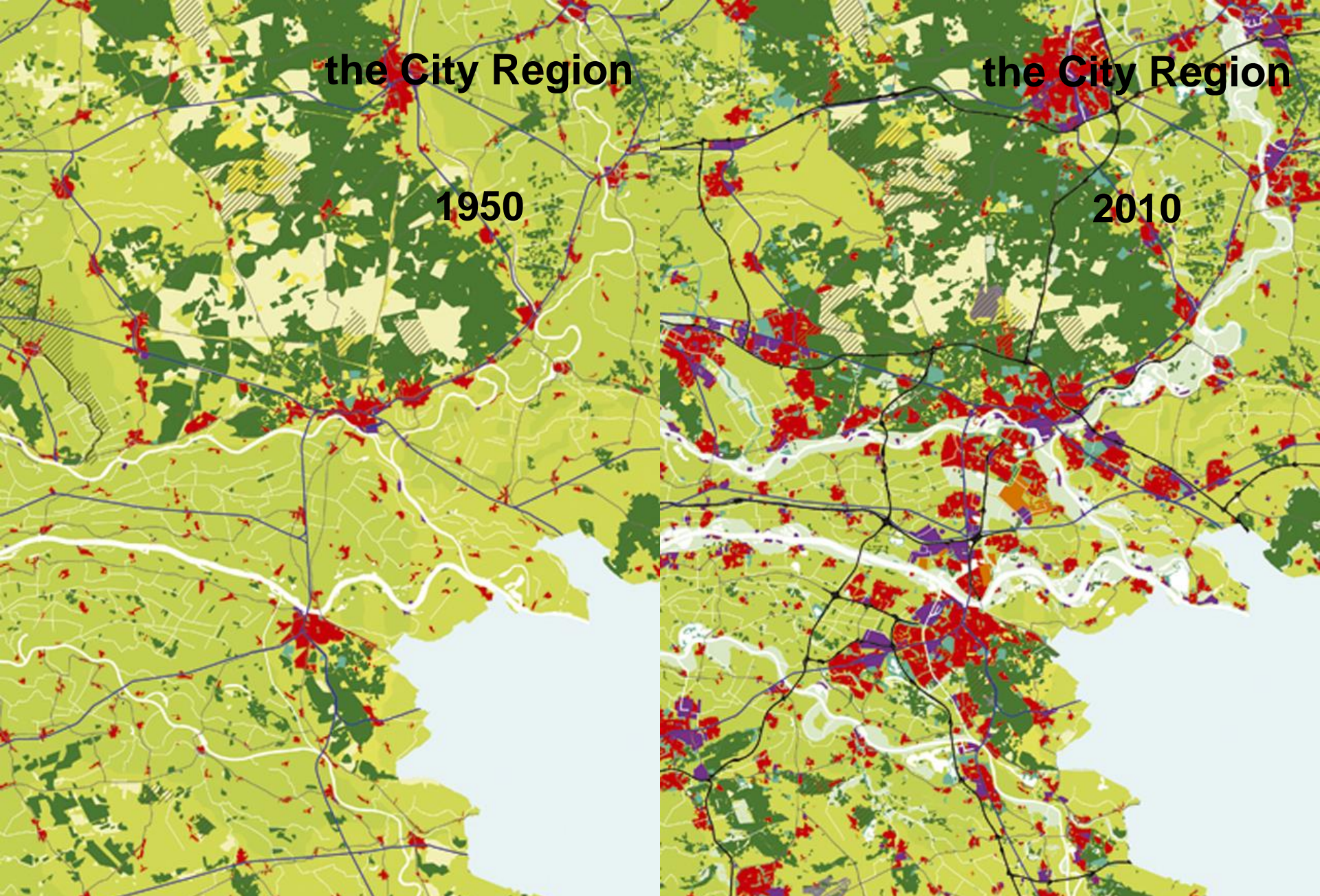
- Time for cycle planning!

the City Region

1950

the City Region

2010



Implementing in the existing city

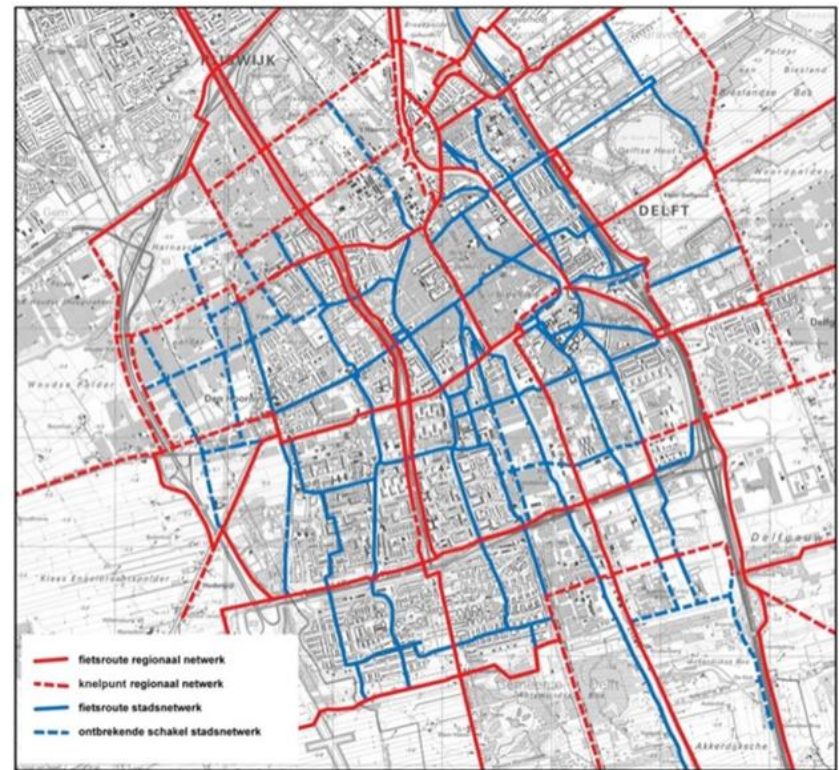
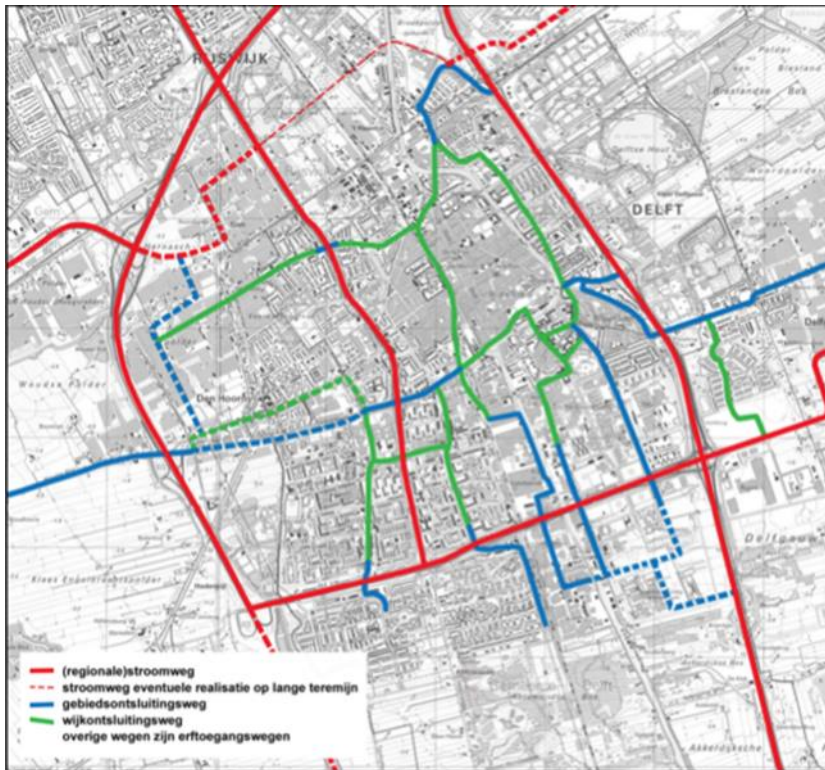
1. Analyze the demand (existing and future cyclists);
2. Define bicycle network;
3. Start implementing small improvements (growth of the amount of cyclists);
4. Bigger improvements when cycling becomes a political factor
→ Cycle Highways.



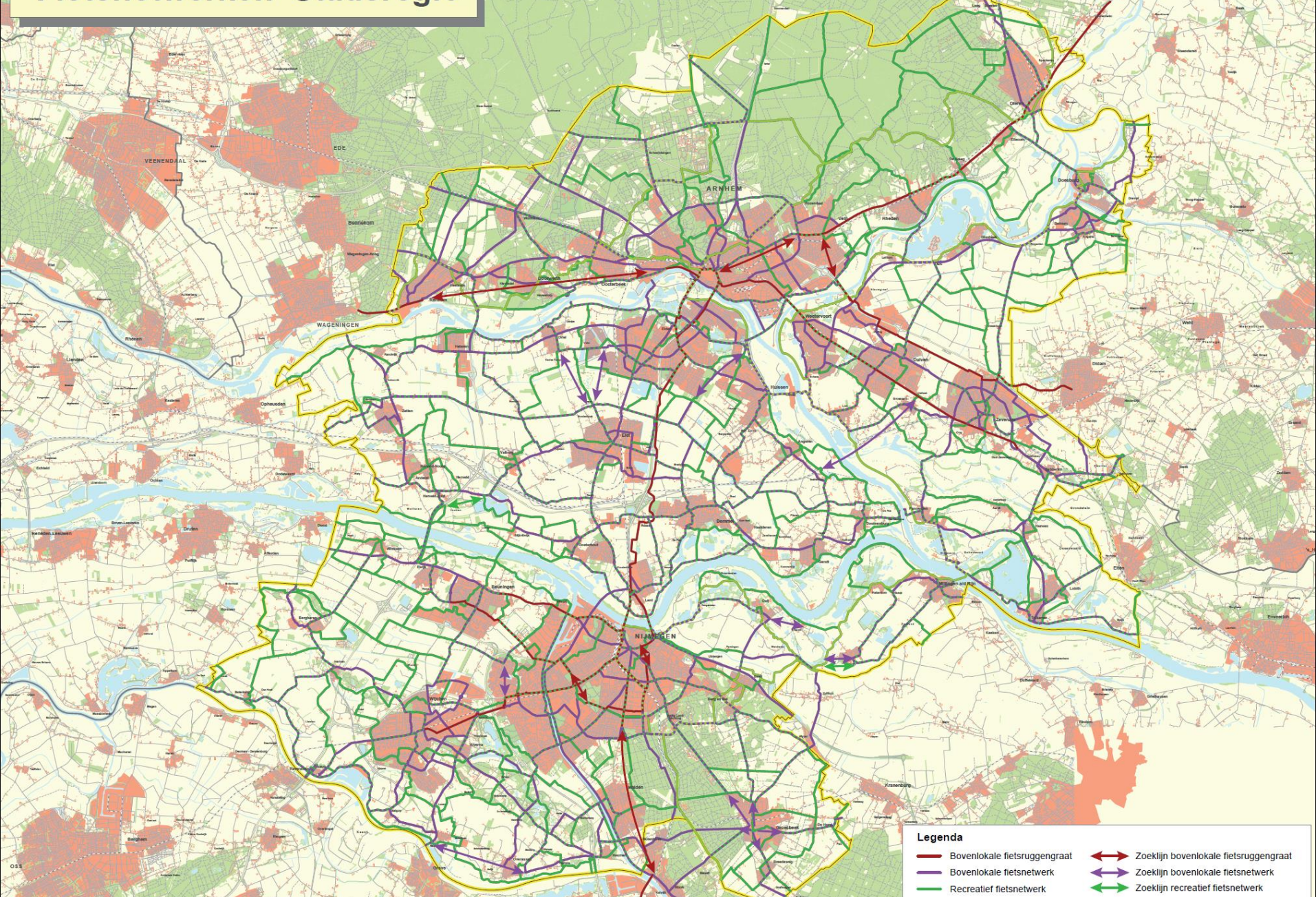
Example: step 2 in Amsterdam



Example: step 2 in Delft









Step 4: political support



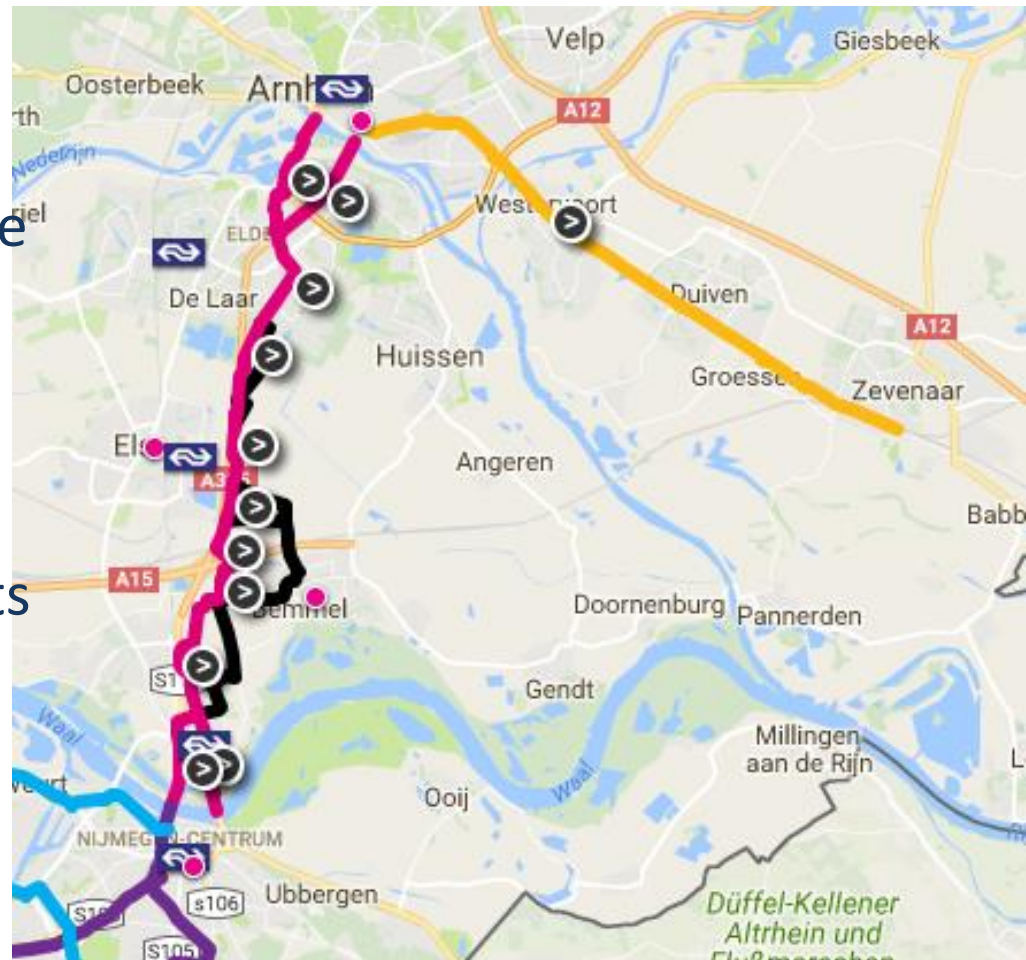


Together with the municipalities

www.velo-city2017.com

Rijnwaalpad

- 17 km long;
- € 17 mln.
- Including 2 tunnels, 1 bridge
- 4 municipalities
- New Bike paths
- Use of existing roads
- Connecting attraction points
- Integration with public transport



Waalbridge



Before



www.velo-city2017.com

After



www.velo-city2017.com



2021/15/15/15/15/15

2021/15/15/15/15/15



Before



After

www.velo-city2017.com



www.velo-city2017.com



Multi-use

www.velo-city2017.com



Crossing the Ring Road

www.velo-city2017.com



Crossing the Ring Road

www.velo-city2017.com

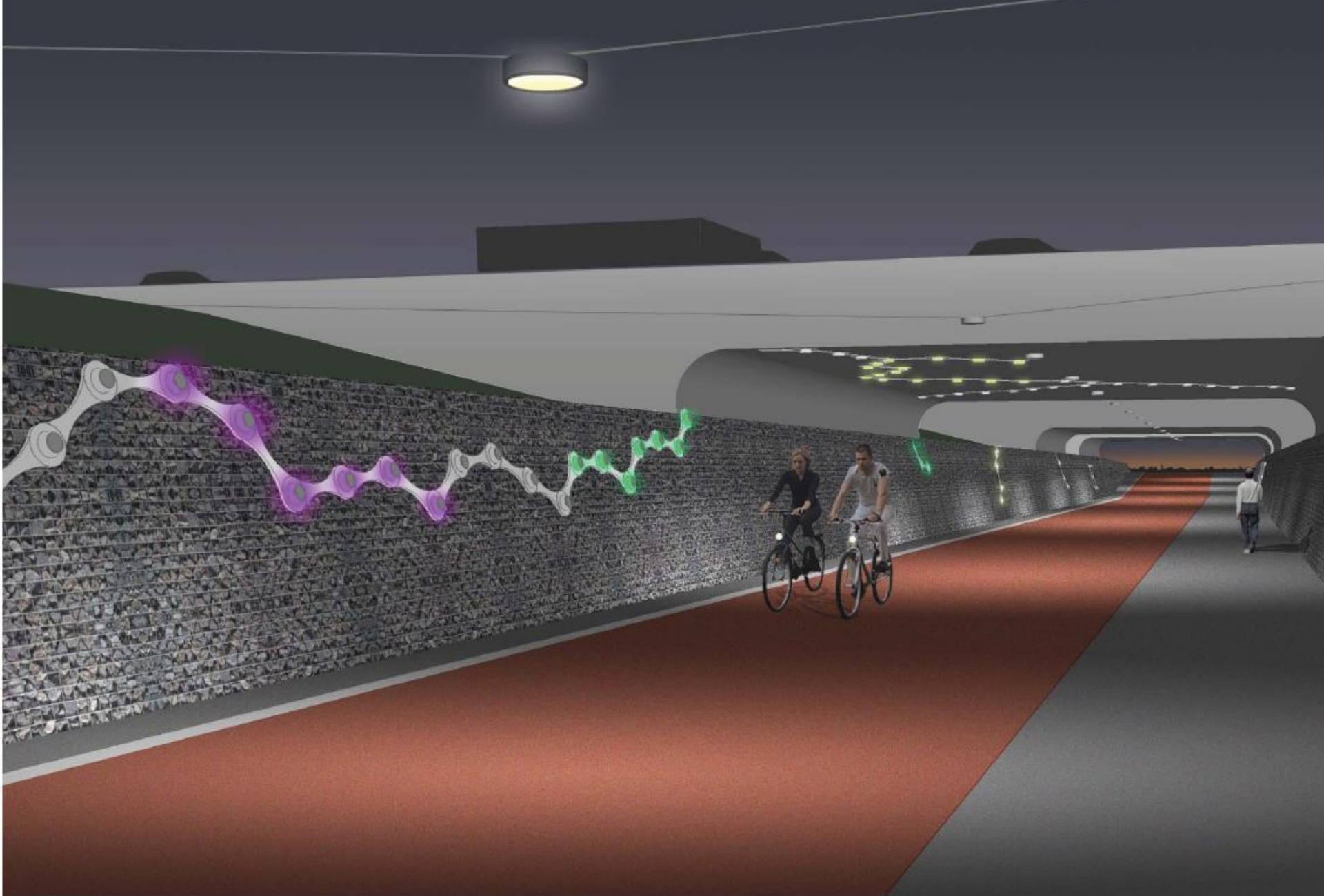


Highway tunnel [A15]



Grand opening

www.velo-city2017.com



www.velo-city2017.com







www.velo-city2017.com



High-tech wayfinding

www.velo-city2017.com



A problem....