



The Present State and Future Outlook of Taipei's Traffic

Anne CHUNG

Commissioner of the Department of Transportation, Taipei City Government

Contents

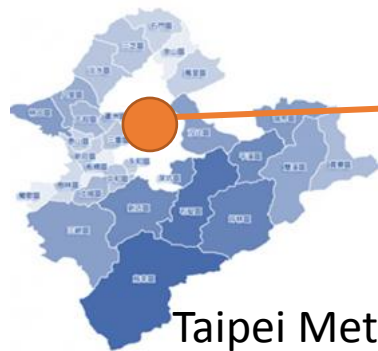
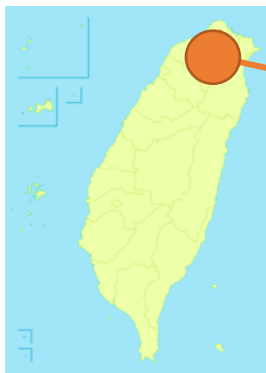
1. Present traffic State in Taipei

2. The Challenges of Becoming a Bike-friendly City

3. How to Build a Better Future

City's Profile

Characteristic	Taipei Metropolitan (Taipei and New Taipei)	Taipei
Population	6.67 million persons	2.7 million persons
Area	2,324 km ²	271.79 km ²
Population Density	3,609 persons/km ²	9,956 persons/km ²
Road Area	63.29 million m ²	20.92 million m ²
Registered Automobiles	1,775,037	787,676
Registered Motorcycles	3,171,715	980,577
Daytime Population	About 13.97 million persons	About 4.50 million persons



Taipei Metropolitan



Taipei City

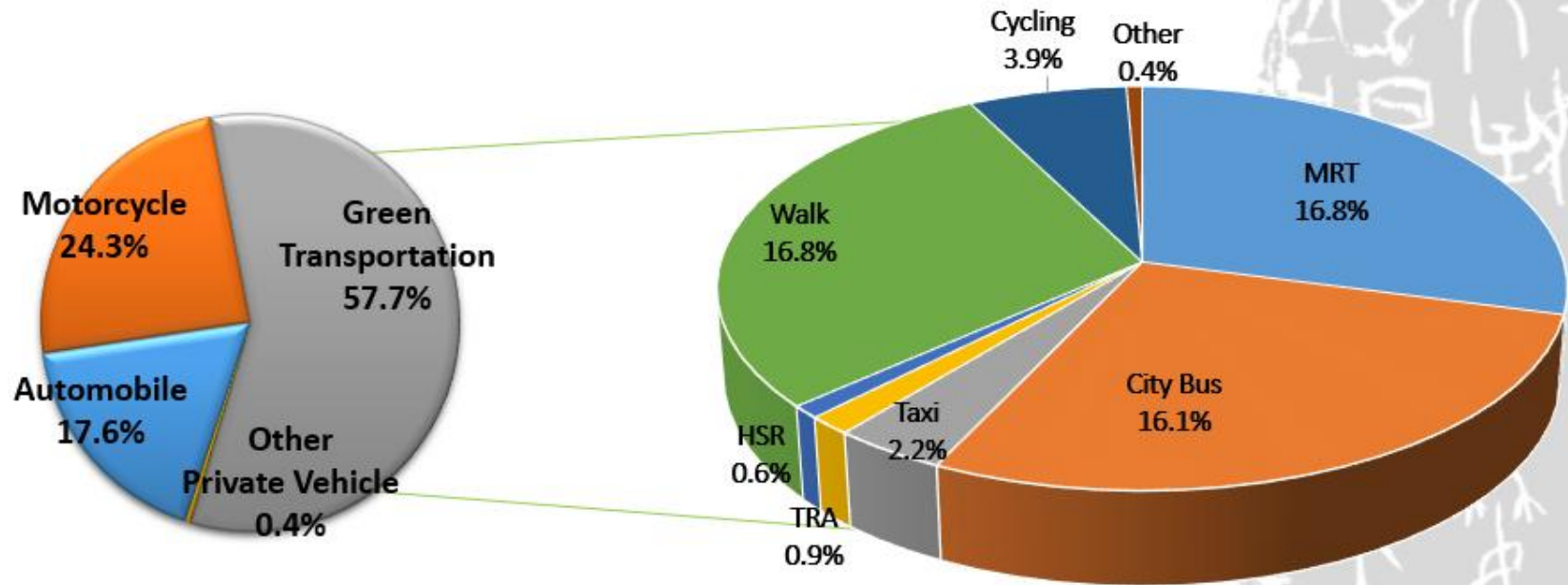
Daytime Traffic in Taipei

Typical Asian City Type

-Road Usage with Mixed Transport Tools.



Taipei City's Green Transportation Composition Chart



By 2020 –
Green Transportation : 70%
Cycling : 12%

The Challenges of Becoming a Bike-friendly City!



Voice from citizens

1. We need a safer environment to cycle.
2. Where do we park our bikes?
3. The weather make me feel uncomfortable when I cycle.



High Population Density

Limited Road Space

- Parking Issues
- Mixed Traffic Flow & Safety

Weather

- Hot & Humid in Summer

How to Build a Better Life and Future



Enhance the Public Transportation(PT) system to replace more private transport tool users.

Use the Citywide Public Bike System to solve the limited parking space issue caused by private bikes.

Learn from the past failure to create a cyclist-friendly environment.

Establish a comprehensive private vehicle management plan.

Behavior Transition Strategy

Mode Choices

Improve PT's competitiveness

Public Transportation

- Higher travel cost
- Lower accessibility

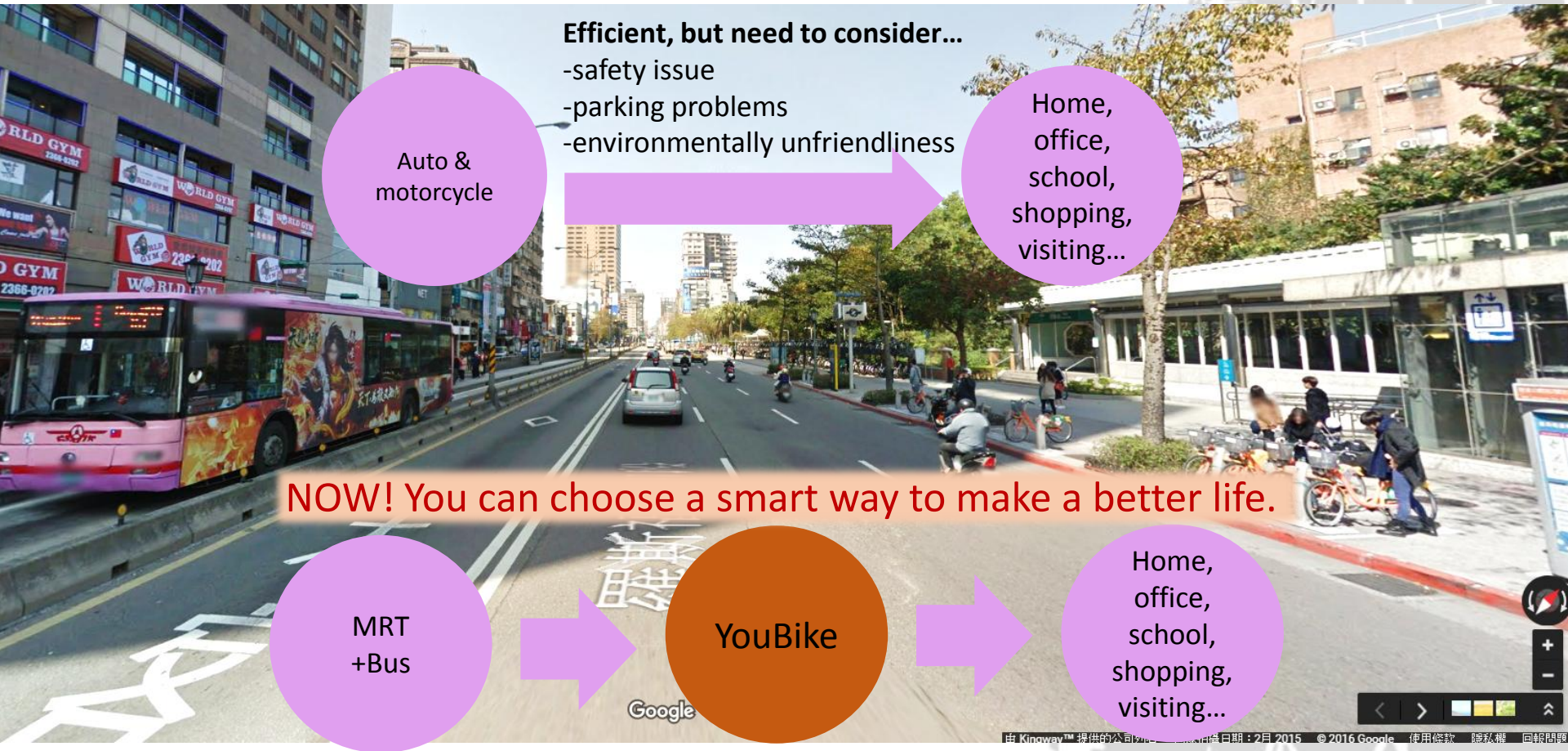
- **Increase the accessibility**
 - Last mile service

Auto & Motorcycle

- Lower travel cost
- Better accessibility

- **Raise the travel cost**
 - Citywide street parking fee collection

You said! We did!



You said! We did!

Renting a bicycle to travel in Taipei is smarter

- No annual fee YouBike system makes it easy to register simply by using a cell phone number and an EasyCard
- For now, 222 stations and 7,264 bikes with the turnover rate of 7 times/bike has reduced the parking space of 50,848 bikes.
- The city will expand up to 400 stations with 13,000 bikes by 2018, and citizens can reach a station by a 5-mins walk (approx. 350 m).



You said! We did!

Taipei's friendly cycling environment

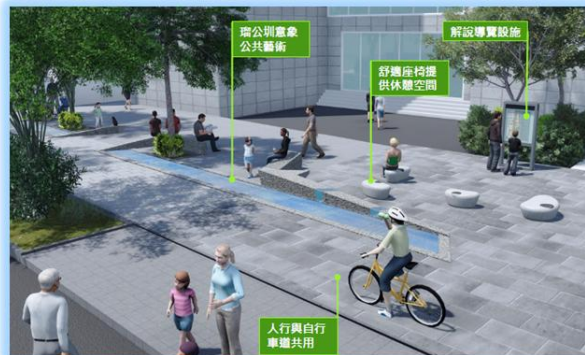
-In 2010, we learned from Europe, but not suitable for the cities as Taipei.



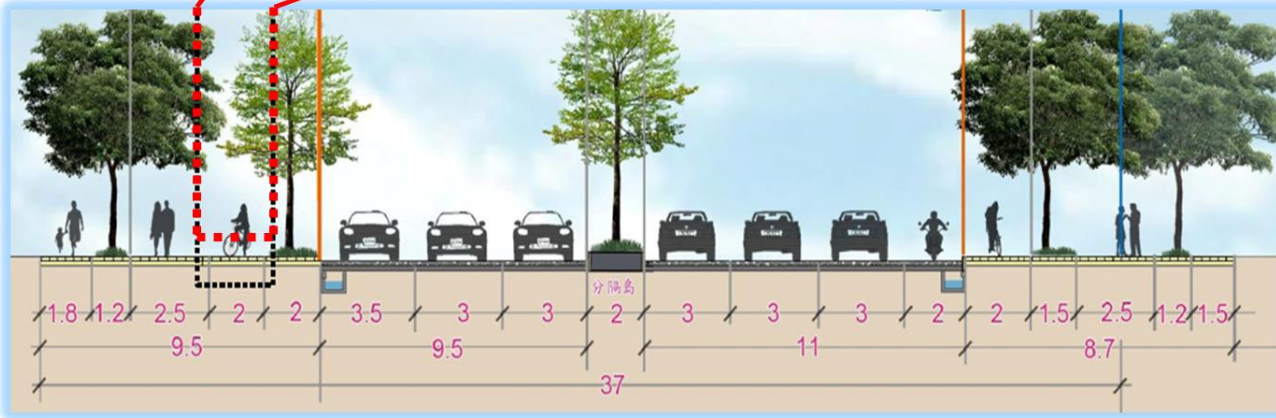
You said! We did!

Taipei's friendly cycling environment

- Redesign bike lanes for Asian cities.
- Broaden the sidewalk, and reallocate the space for pedestrians and cyclists.



Before



After

You said! We did!

Taipei's friendly cycling environment

- Complete 190 km bike lanes by 2019
- Bike space will be considered in the blueprint of urban design and plan.



You said! We did!

Private vehicles management

- Collect the parking fees of each on-street parking space to increase the travel cost and reduce the usage.
- Review the driving test system, and reformulate it to make a suitable test for enhancing drivers' safety.



You said! We did!

ETC (Electronic Toll Collection) Applied to Collect Parking Fee

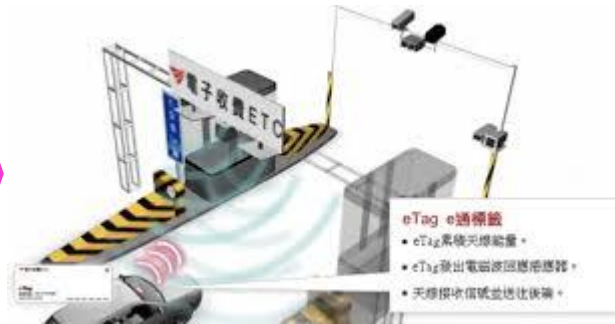
- The first one of fully charged by ETC on whole Freeway system.
- Accuracy rate has reached 99.9%
- Won the ITS World Congress Industry Award , ITBBA , R&D 100 Award in 2015



You said! We did!

Integrated vehicles management system

-The data of the transportation will be collected by ETC(Electronic Toll Collection).



Free ways

Parking lots

Urban roads

- Detect the data of traveling behavior in city
- Easy to collect the parking fee
- Transportation management.
- Crime investigation.

Pay by mobile phone

You said! We did!

Private vehicles management

-Reorganized the alleys for pedestrians' safety and friendly environment.



Thank you for your Listening!

**A more Sustainable
and Livable City**

