

# Dublin City & the Liffey Cycle Route

Roy O'Connor - Chartered Engineer



**Velo-City 2019**  
**'Cycling for the Ages'**  
Dublin, Ireland,  
25-28 June, 2019





## Presentation Content

- Dublin context
- City Centre Transport Environment
- River Liffey
- Liffey Cycle Route
  - Policy
  - Technical Guidance
  - Hueston Station environs
  - Emerging Preferred Design images
  - Next Steps

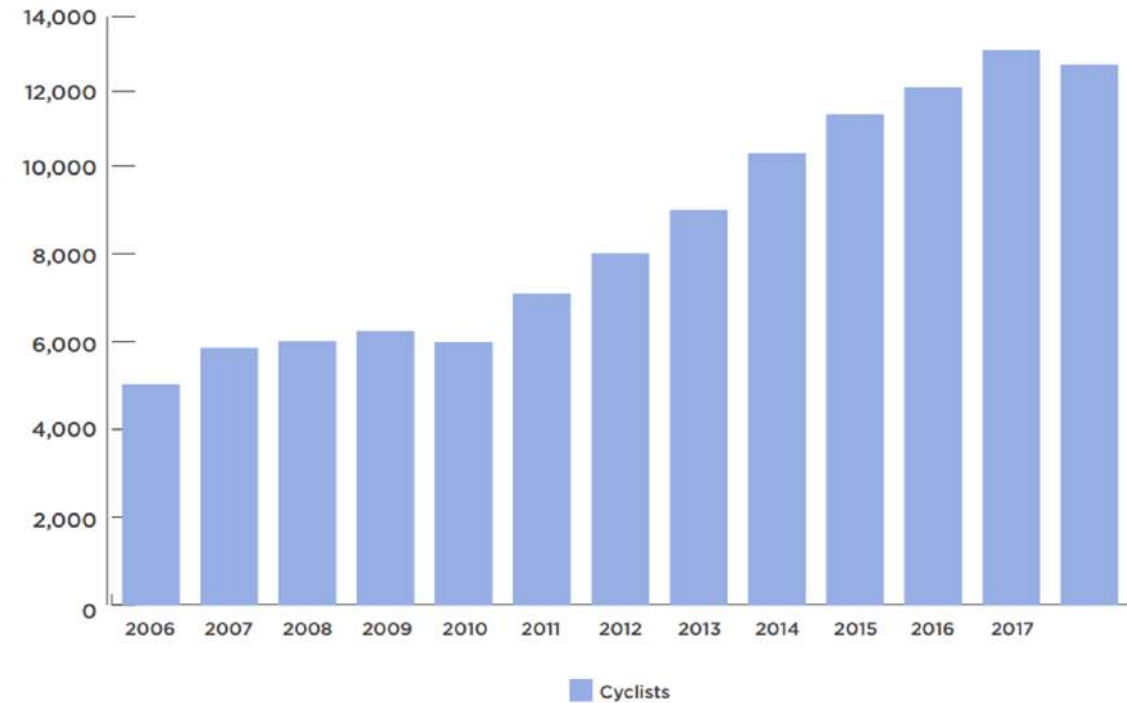
- Dublin Context
- Co. Dublin has 4 municipal authorities
- 28% of the 4.78m population of Ireland
- 1.3 million in Greater Dublin Area (c.1.9 m in wider Copenhagen).
- Economic driver for region
- Est. 2.2 million Pop. 2031
- Increasing journey demands



## City Centre Transport Environment

- Historic city core (Narrow streets)
- Irelands biggest port 2km from centre
- Royal & Grand Canal encircle the city centre (115,000 pop.)
- 213,920 people every morning, 7am – 10am (2018 data).
- 70% of people (148,600) use sustainable transport modes. Including;
  - Walking (23,856)
  - Cycling (12,227),
  - Bus (64,206) &
  - Rail (48,306)
- High west/east traffic demand through city centre along the River Liffey Corridor

Number of Cyclists Crossing Cordon in AM Peak Period, 2006-2018



## River Liffey

Cyclist numbers now exceed 1,000 during the morning peak hours, along the Liffey Quays.

Rathmines Road = 1700 (Highest volumes)

Traffic movement is tidal in nature.

There are no segregated cycle facilities from the west to city centre, mainly shared bus & cycle lanes

Cyclists exceed the numbers of persons travelling by car.

The Liffey Quays carry many of our primary bus routes with circa 370 buses (30,000 passengers) at peak hours.

Environmental Considerations include:

Mature trees, bridges, street furniture, cultural & historic buildings.



## River Liffey

- Dublin Port
- Convention centre
- IFSC
- Customs House
- Liberty Hall
- O'Connell Street
- Temple Bar
- Wood Quay (Viking)
- Christchurch Cathedral
- Four Courts
- Guinness Storehouse
- Croppy's Acre
- Hueston Station (Busiest)
- Phoenix Park



# Liffey Cycle Route Project

RECONNECTING THE RIVER LIFFEY TO ITS CITY

## Overall Objective:

To develop a Liffey Cycle Route which provide a safe, continuous & segregated cycle facility in both directions between Phoenix Park / Heuston Station & the Tom Clarke East Link Bridge.





You Are Here

Dublin Bay

3.5km

Hueston Train Station



# Policy:

This transport strategy

## Cycling (8.5.4.1)

The expansion of the strategic cycle network along all major water bodies including the River Liffey and the canals.

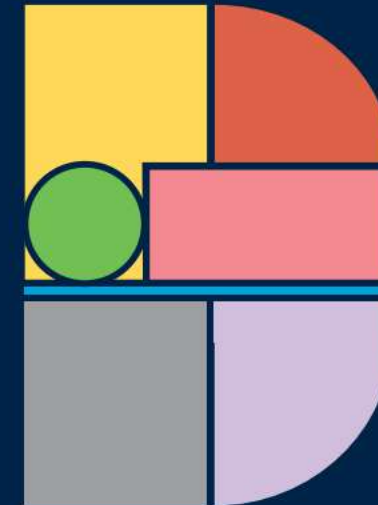
16 Objectives under cycling, including;

MT09: To develop, within the lifetime of this plan, the Strategic Cycle Network for Dublin city - connecting key city centre destinations to the wider city and the national cycle network, and to implement the NTA's Greater Dublin Area Cycle Network Plan, and;

MT013: In accordance with cycle routes identified in the National Transport Authority's Greater Dublin Area Cycle Network Plan.

## Dublin City Development Plan 2016–2022

Written Statement



Comhairle Cathrach  
Bhaile Átha Cliath  
Dublin City Council

THE GREATER DUBLIN AREA

DUBLIN CITY CENTRE  
SHEET N1a

Greenway  
Major Greenway  
Employment Zones  
Headlines

Employment Zones  
Headlines

University  
Village Centre

Employment Zones  
Headlines

University  
Village Centre

Employment Zones  
Headlines

University  
Village Centre

Employment Zones  
Headlines

University  
Village Centre

Employment Zones  
Headlines

University  
Village Centre

Employment Zones  
Headlines

University  
Village Centre

Employment Zones  
Headlines

University  
Village Centre

Employment Zones  
Headlines

University  
Village Centre

Employment Zones  
Headlines

University  
Village Centre

Employment Zones  
Headlines

University  
Village Centre

Employment Zones  
Headlines

University  
Village Centre

Employment Zones  
Headlines

University  
Village Centre

Employment Zones  
Headlines

Naisiúnta Iompartha  
National Transport Authority

Roughan & O'Donovan

100-101, 102-103  
Dublin City Council

# Technical Guidance



1.0 The Basics

2.0 Legislation & Policy

3.0 Planning for the Bicycle

4.0 Designing for the Bicycle

5.0 Getting the Details Right

6.0 Maintenance

7.0 Tools and Checklists

## 4.0 Designing for the Bicycle

4.1 Tips for A Good Design

4.2 Links Introduction

4.3 Link Types

4.4 Junction Introduction

4.5 Left Turns

4.6 Right Turns

4.7 Crossings

4.8 Roundabouts

4.9 Side Roads or T-Junctions

4.10 Transitions

4.11 Design and Construction Flowchart

# What do we want?

Promote our historic buildings

Cleaner Air & less noise

Improved connectivity with city centre

Minimise conflicting movements (with bus stops, at junctions, etc.)

Efficiency of movement of people

Safety of vulnerable road users

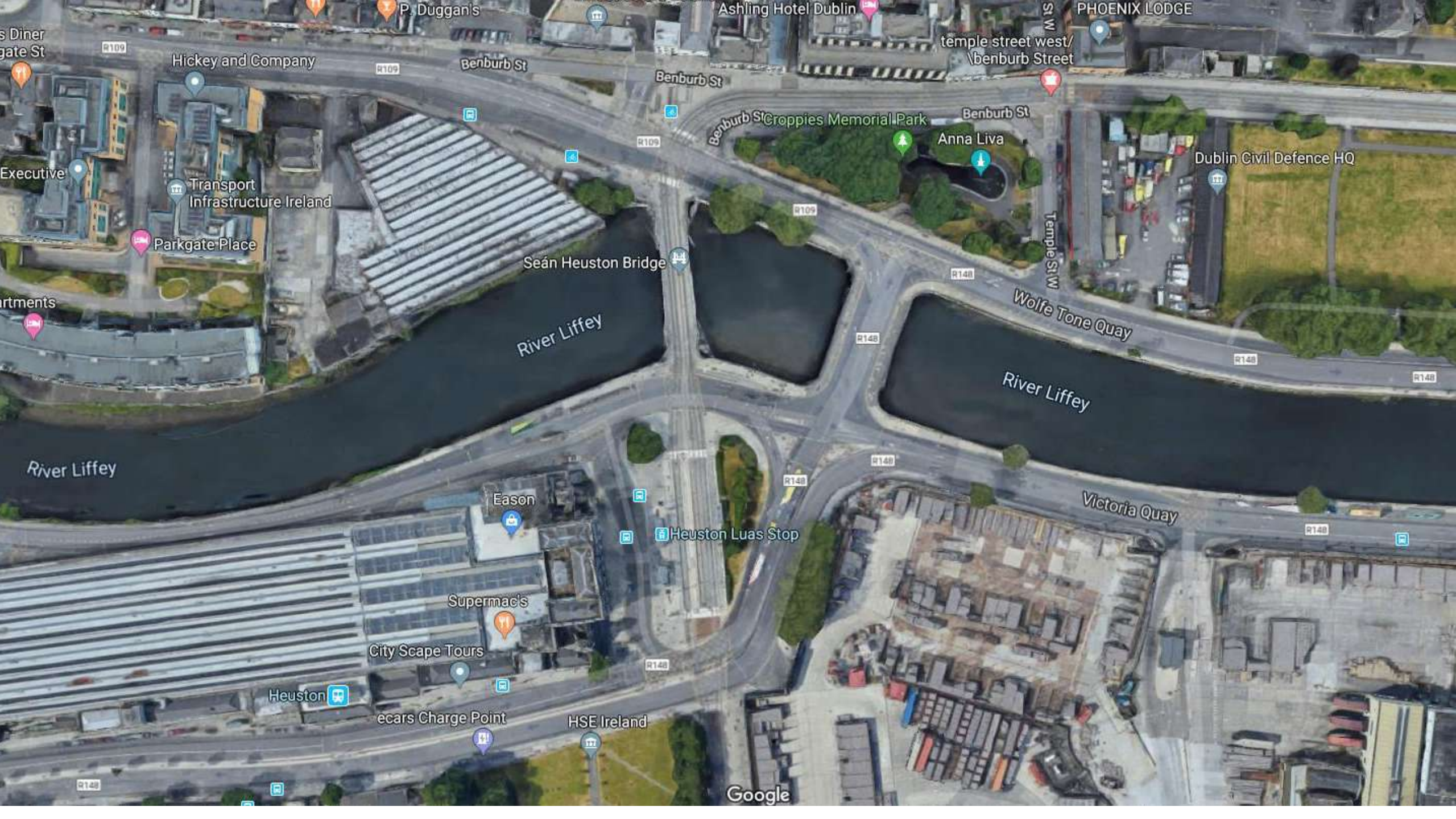
Calming traffic speeds

Healthy travel choices

More equitable distribution of road space

Maintain high capacity for the bus network





s Diner  
gate St

R109

Hickey and Company

Benburb St

Benburb St

Benburb St

Croppies Memorial Park

Benburb St

Anna Liva

PHOENIX LODGE

temple street west/  
Benburb Street

Executive

Transport  
Infrastructure Ireland

Parkgate Place

rtments

Seán Heuston Bridge

River Liffey

R109

R148

Wolfe Tone Quay

Dublin Civil Defence HQ

R148

River Liffey

River Liffey

R148

R148

Victoria Quay

R148

Eason

Heuston Luas Stop

Supermac's

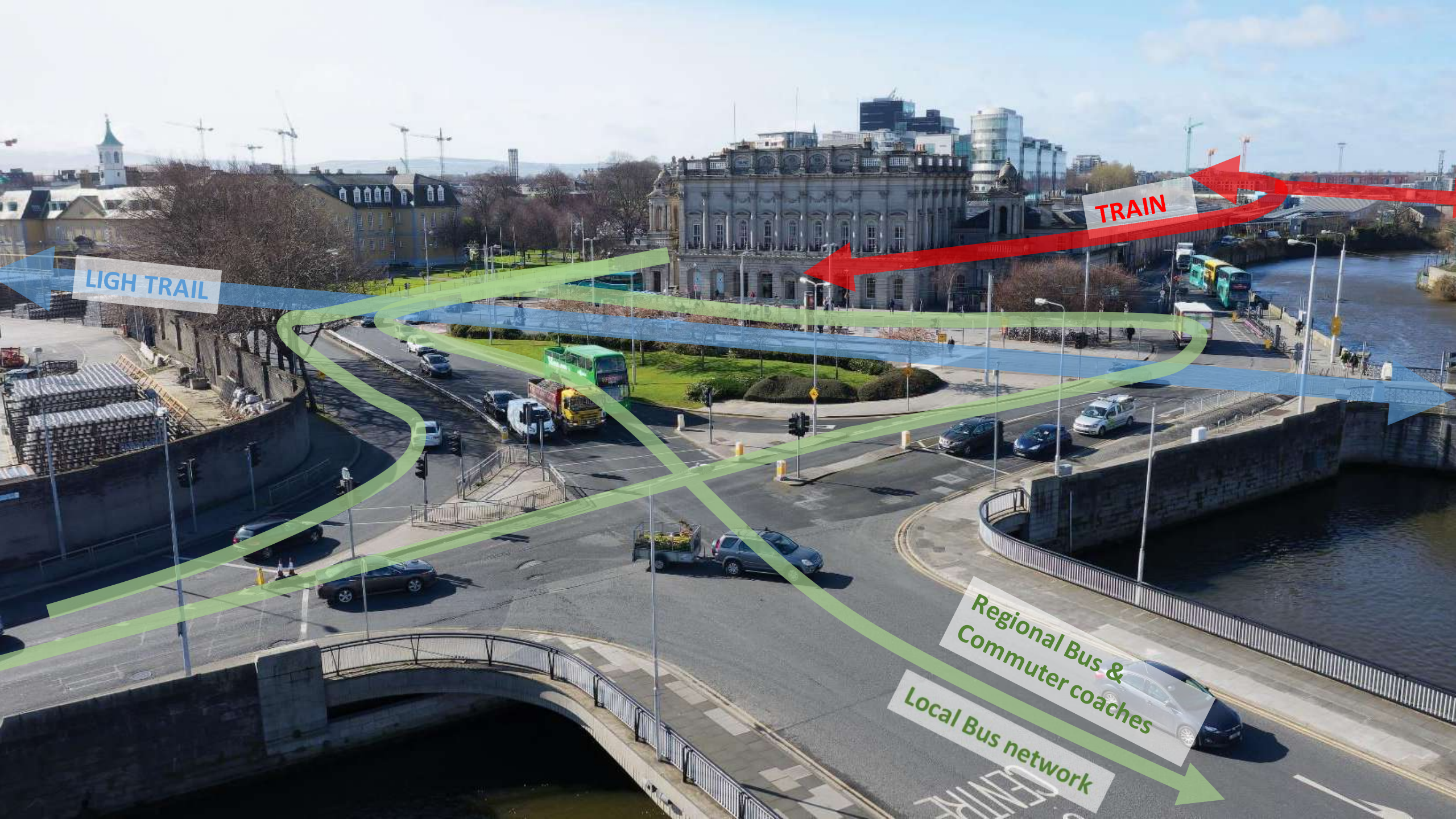
City Scape Tours

Heuston

ecars Charge Point

HSE Ireland

Google



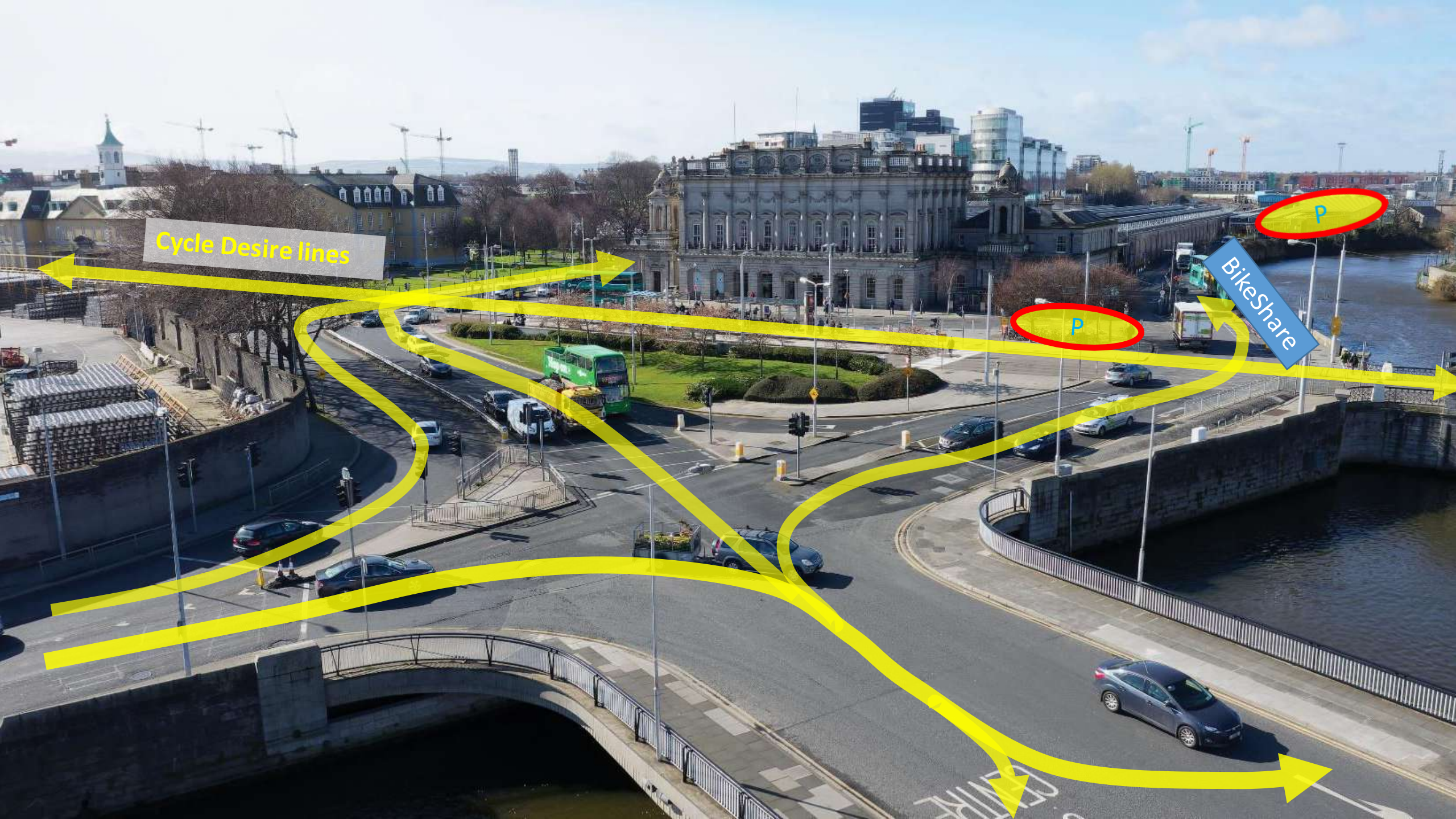
LIGH TRAIL

TRAIN

Regional Bus & Commuter coaches  
Local Bus network

**General Traffic Routes**



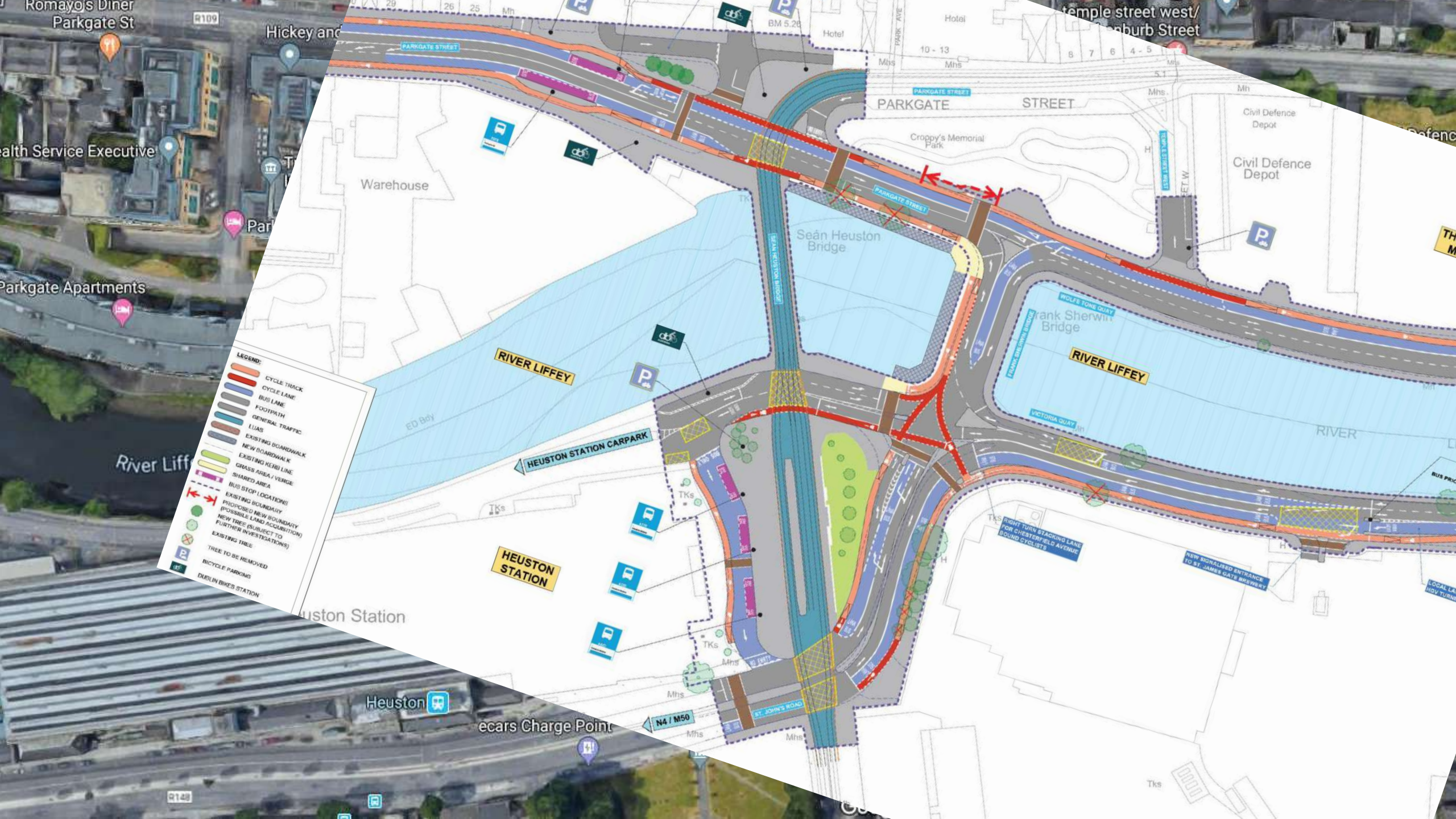


Cycle Desire lines

BikeShare

P

P



- LEGEND:**
- CYCLE TRACK
  - CYCLE LANE
  - BUS LANE
  - FOOTPATH
  - GENERAL TRAFFIC
  - ELIAS
  - EXISTING BOARDWALK
  - NEW BOARDWALK
  - EXISTING KERB LINE
  - GRASS AREA / VERGE
  - SHARED AREA
  - BUS STOP LOCATIONS
  - EXISTING BOUNDARY
  - PROPOSED NEW BOUNDARY
  - POSSIBLE LAND ACQUISITION
  - NEW TREE (SUBJECT TO FURTHER INVESTIGATIONS)
  - EXISTING TREE
  - TREE TO BE REMOVED
  - P BICYCLE PARKINGS
  - P DUBLIN BIKES STATION

Romayo's Diner  
Parkgate St

Health Service Executive

Parkgate Apartments

River Liffey

Heuston Station

Heuston

ecars Charge Point

R148

Hickey and

Warehouse

RIVER LIFFEY

HEUSTON STATION

HEUSTON STATION CARPARK

BM 5.26

Hotel

10 - 13

PARKGATE STREET

PARKGATE STREET

PARKGATE STREET

Sean Heuston Bridge

Frank Sherwin Bridge

RIVER LIFFEY

RIVER

RIGHT TURN STAGING LANE FOR CHESTERFIELD AVENUE ROUND CYCLISTS

NEW SIGNALISED ENTRANCE TO ST. JAMES GATE BREWERY

N4 / M50

ST. JOHN'S ROAD

Civil Defence Depot

Civil Defence Depot

TH M

LOCAL LA

RDY TURN







## Croppy's Acre

Adjacent to the Army Barracks  
(now National Museum of Ireland).

Memorial Park and reputed burial  
ground of Irish rebel casualties of the  
1798 Rebellion.

Wolfe Tone Quay



Wolfe Tone Quay

## Four Courts

Construction: 1786 – 1802.

Today it is the Supreme Court, the Court of Appeal, the High Court and the Dublin Circuit Court.

Headquarters of the 1<sup>st</sup> Battalion during the Easter Rising 1916.

Occupied by armed forces during Irish Civil War receiving substantial damage.

The “Witness Trees” to be retained

Inns Quay



Inns Quay



## Bachelor's Walk

### Engineering Challenges:

- High capacity bus stops – City centre stops.
- Change cycle lane to quay side of road.
- Trees area an obstacle

## Engineering Challenges:

High capacity bus stops – City centre stops.

Change cycle lane to quay side of road

**Bachelor's Walk**





An aerial photograph of Dublin, Ireland, showing the city's layout, the River Liffey, and the surrounding urban area. Overlaid on the image are several colored lines representing different transport routes: a blue line, a green line, a purple line, and a red line. A red polygon highlights the Hueston Train Station area. The text 'Hueston Train Station' is written in white on this polygon.

## Transport Integration considerations:

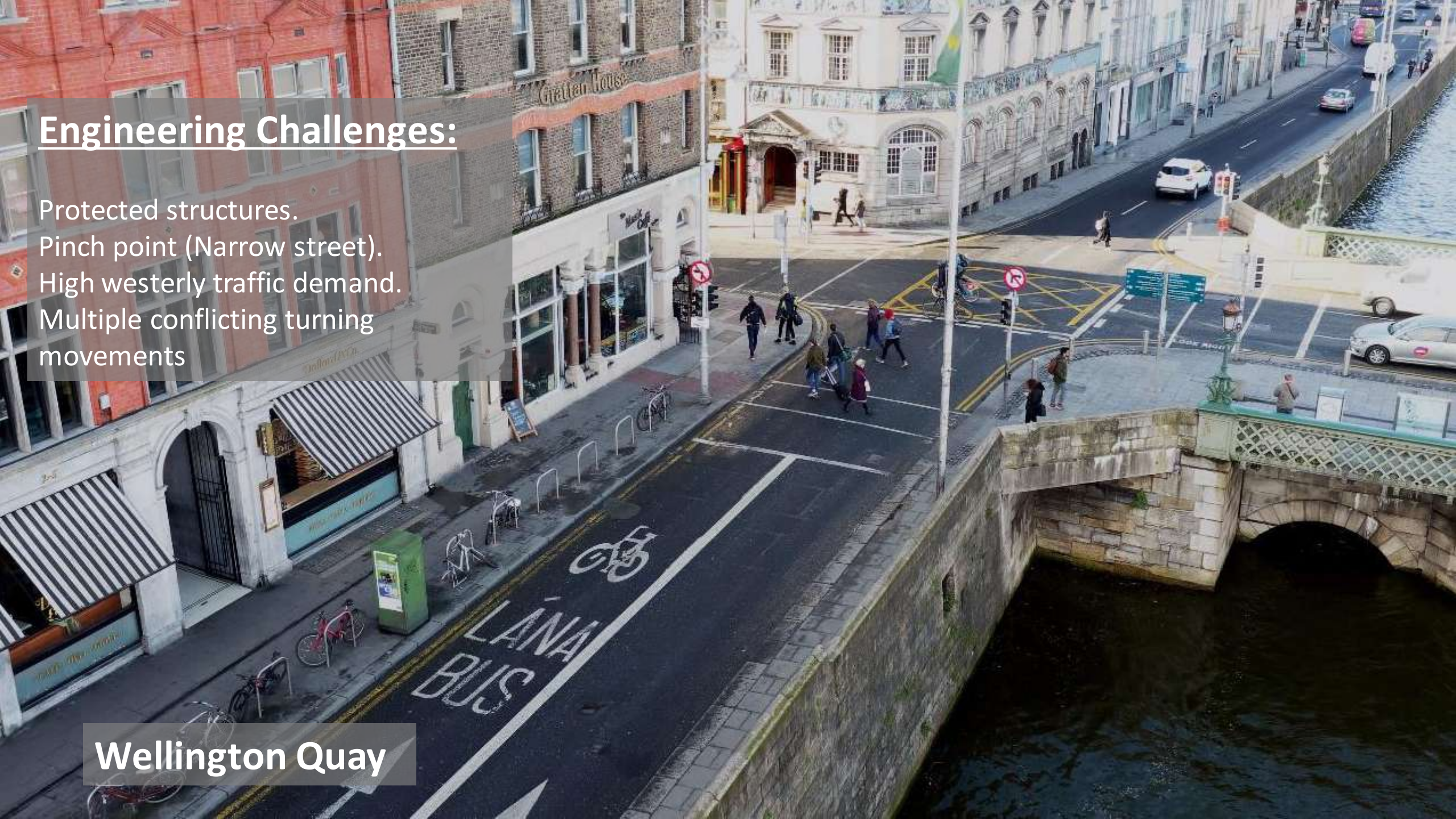
Critical design item at detailed stage to integrate with :

- Luas
- Dart Interconnector
- MetroLink
- BusConnects (along the Quays)
- GDA Cycle Network (along the Quays)

## Engineering Challenges:

Protected structures.  
Pinch point (Narrow street).  
High westerly traffic demand.  
Multiple conflicting turning movements

Wellington Quay





Wellington Quay



## Next Steps:

Public Consultation closed June 2019  
Present agreed scheme for statutory approval.  
Detailed design  
Construction (2021)

Thank you

[www.nationaltransport.ie/public-consultations/](http://www.nationaltransport.ie/public-consultations/)

[www.consultation.dublincity.ie/traffic-and-transport/liffey-cycle-route/](http://www.consultation.dublincity.ie/traffic-and-transport/liffey-cycle-route/)