



COLLECT, AGGREGATE AND USE CYCLING GIS AND P.O.I DATA

FOR CYCLE TOURISTS AND PUBLIC AUTHORITIES


**vélo &
territoires**

COORDINATEUR DU RÉSEAU
NATIONAL CYCLABLE





THE NATIONAL CYCLE ROUTE NETWORK

A 2030 objective for France

23.330 km by 2030

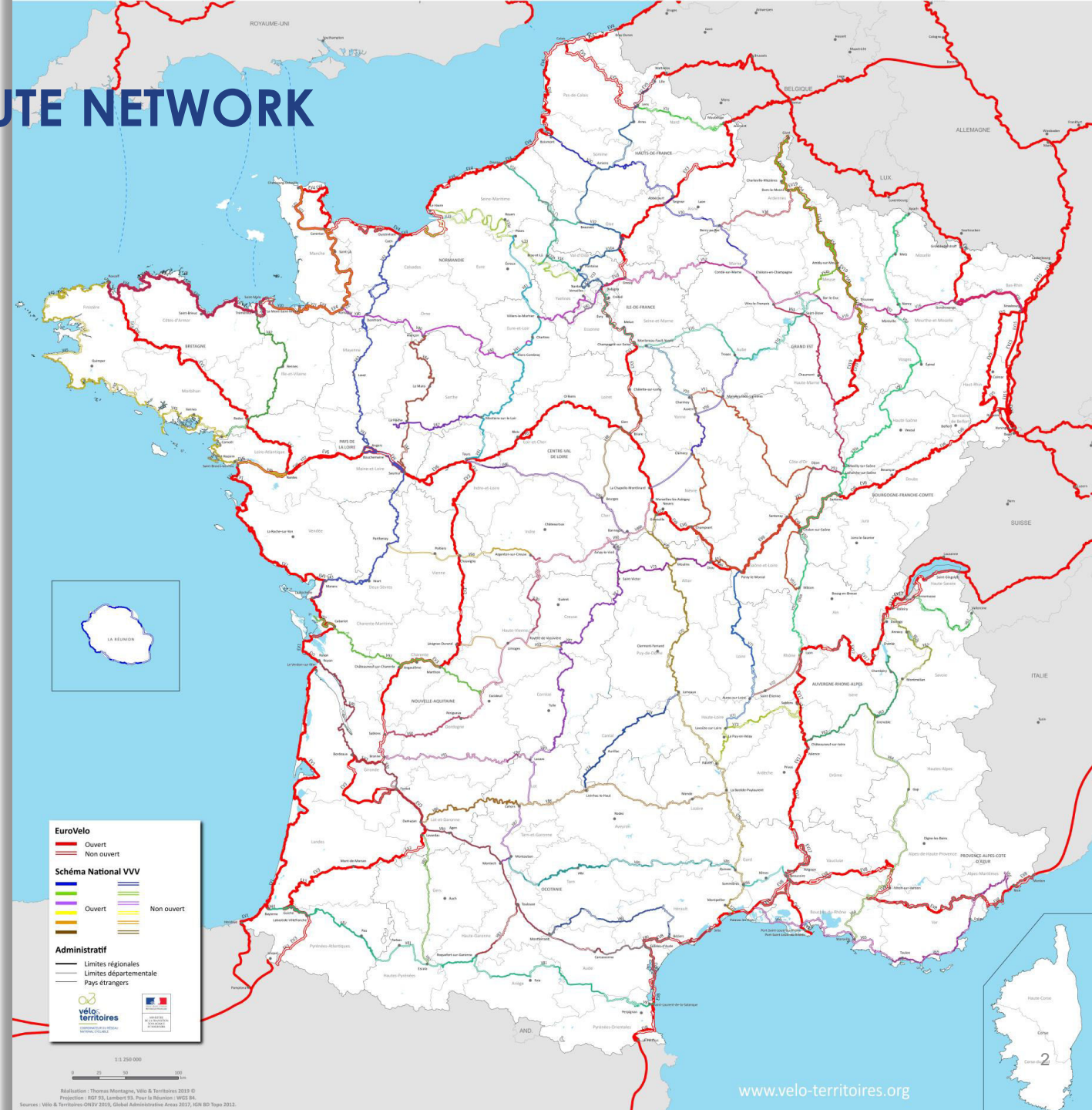
15.780 km **68 %** in place

7.550 km to go

+ 8.700 km of regional networks

9 EuroVelo routes

8 685 km **85%** in place



EuroVelo
Ouvert (red line)
Non ouvert (dashed red line)

Schéma National VVV
Ouvert (various colored lines)
Non ouvert (dashed colored lines)

Administratif
Limites régionales (thick grey line)
Limites départementale (thin grey line)
Pays étrangers (dotted grey line)

vélo: territoires
Ministère de l'Équipement, des Transports et de l'Énergie

Réalisation : Thomas Montagne, Vélo & Territoires 2019 ©
Production : IGN 93, Lambert 93, Pour la Réunion : 9822 BA
Sources : Vélo & Territoires - ONIV 2015, Global Administrative Areas 2017, IGN BD Topo 2012.



A NCN IN PROGRESS

NEEDS MONITORING, INFORMATION, PROVIDES CHOICES TO END USERS

THE DEVELOPPERS OF THE NETWORK [=PUBLIC AUTHORITIES]

Need to monitor level of development and where to allocate their efforts and investments

THE PROMOTIONAL PARTNERS [=TOURISM BOARDS, PRIVATE SERVICE PROVIDERS]

Need to inform on what is available for incoming tourists and to promote with accuracy

END USERS

Need suitable, reliable, updated information on where to go / what to do / and when

EVENTUALLY

End users provide feedback to the developpers and help adjust their action

GOOD DATA IS KEY



EUROVELO 1 – VELODYSSÉY

EXAMPLE FOR THE EFFECTIVE USE OF DATA

A 1290 km cycle route in France
Launched in 2012

72% off-road sections

100% in place

580 cycle-friendly services

- + 372 accomodation + 75 bike-renters / repair-shops
- + 98 tourist offices + 36 visitors' sites

38 recommended daily stages

Always room for improvement





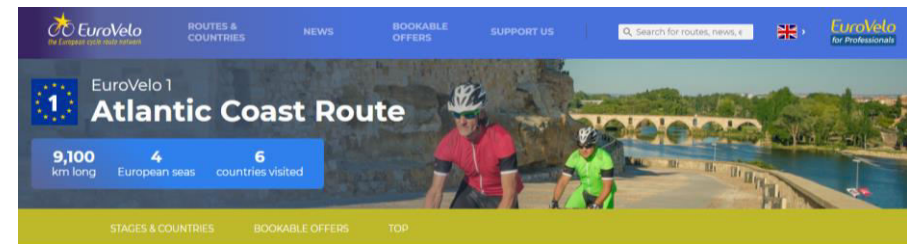
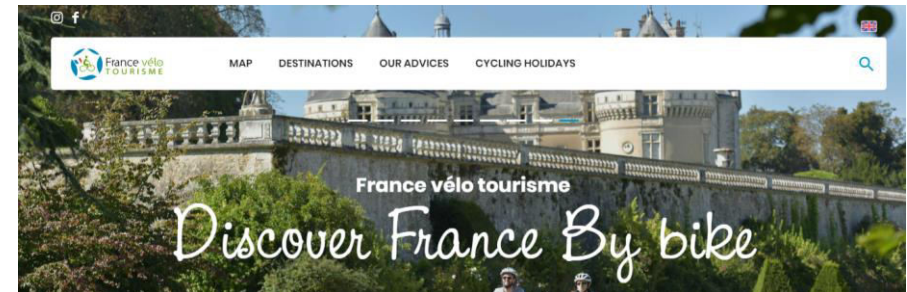
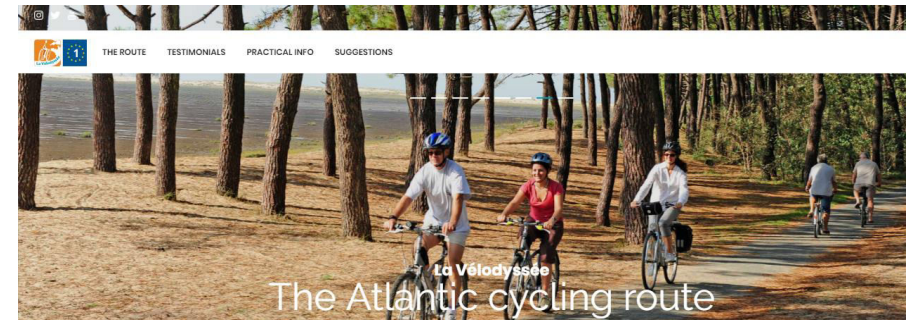
EUROVELO 1 – VELODYSSY

3 LEVELS OF PROMOTION ALL USING DATA

Velodyssey.com

FranceVeloTourisme.com

EuroVelo.com

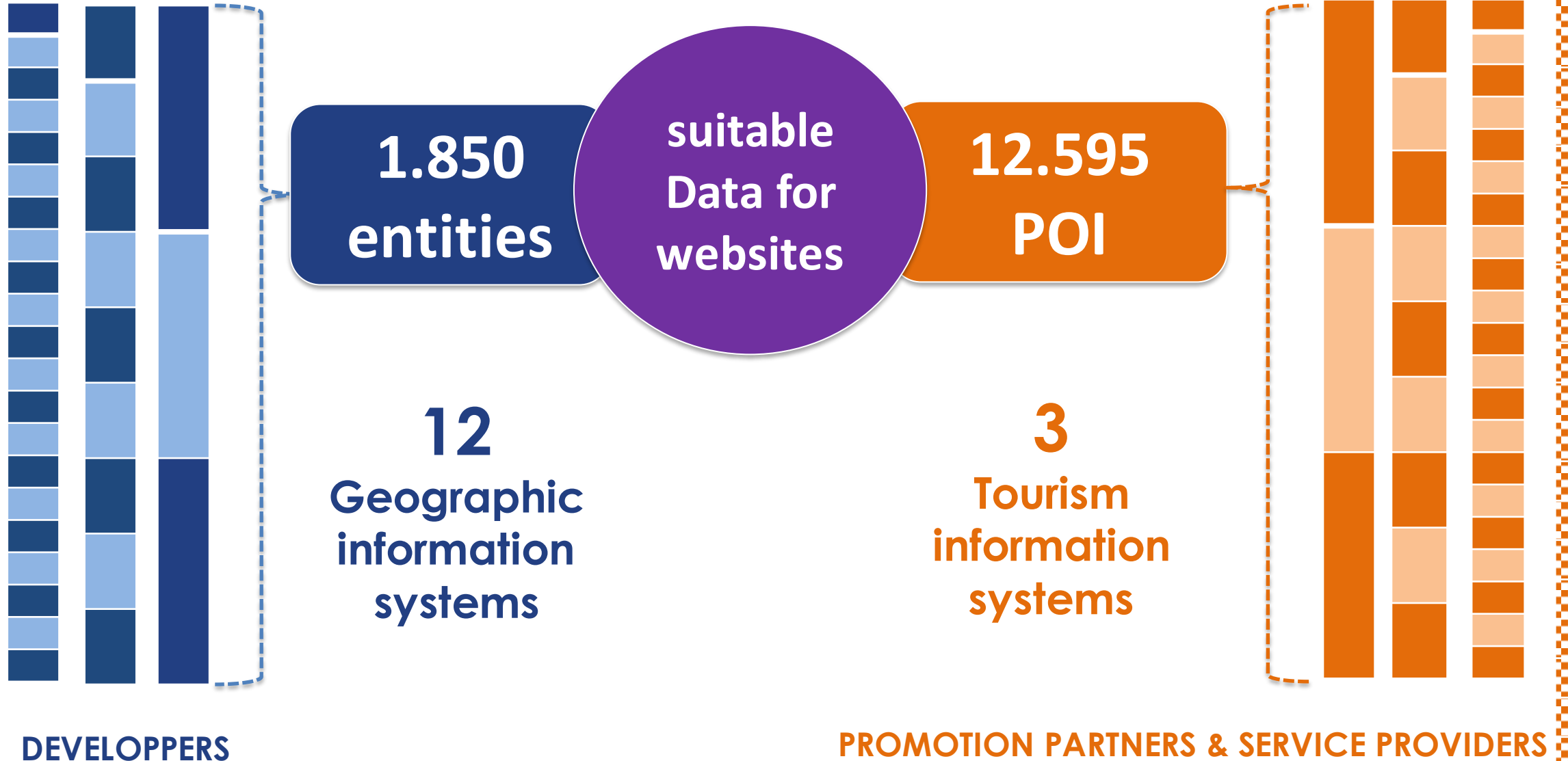


Following Europe's mighty western border, reaching from Scandinavia, to South and Western Portugal, the Atlantic Coast Route visits the majestic fjords of Norway, the wild Irish coastline, the rough cliffs of Brittany and the sun-kissed beaches of Portugal, totalling 9,100km. Along the way you will not only be seduced by bustling port cities and cosy fishing villages, but you will be impressed by dramatic landscapes and



EUROVELO 1 – VELODYSSEY

EXAMPLE FOR THE EFFECTIVE USE OF DATA



Merci de votre attention



Camille THOMÉ

www.velo-territoires.org

info@velo-territoires.org



**vélo &
territoires**

COORDINATEUR DU RÉSEAU
NATIONAL CYCLABLE