




CS7













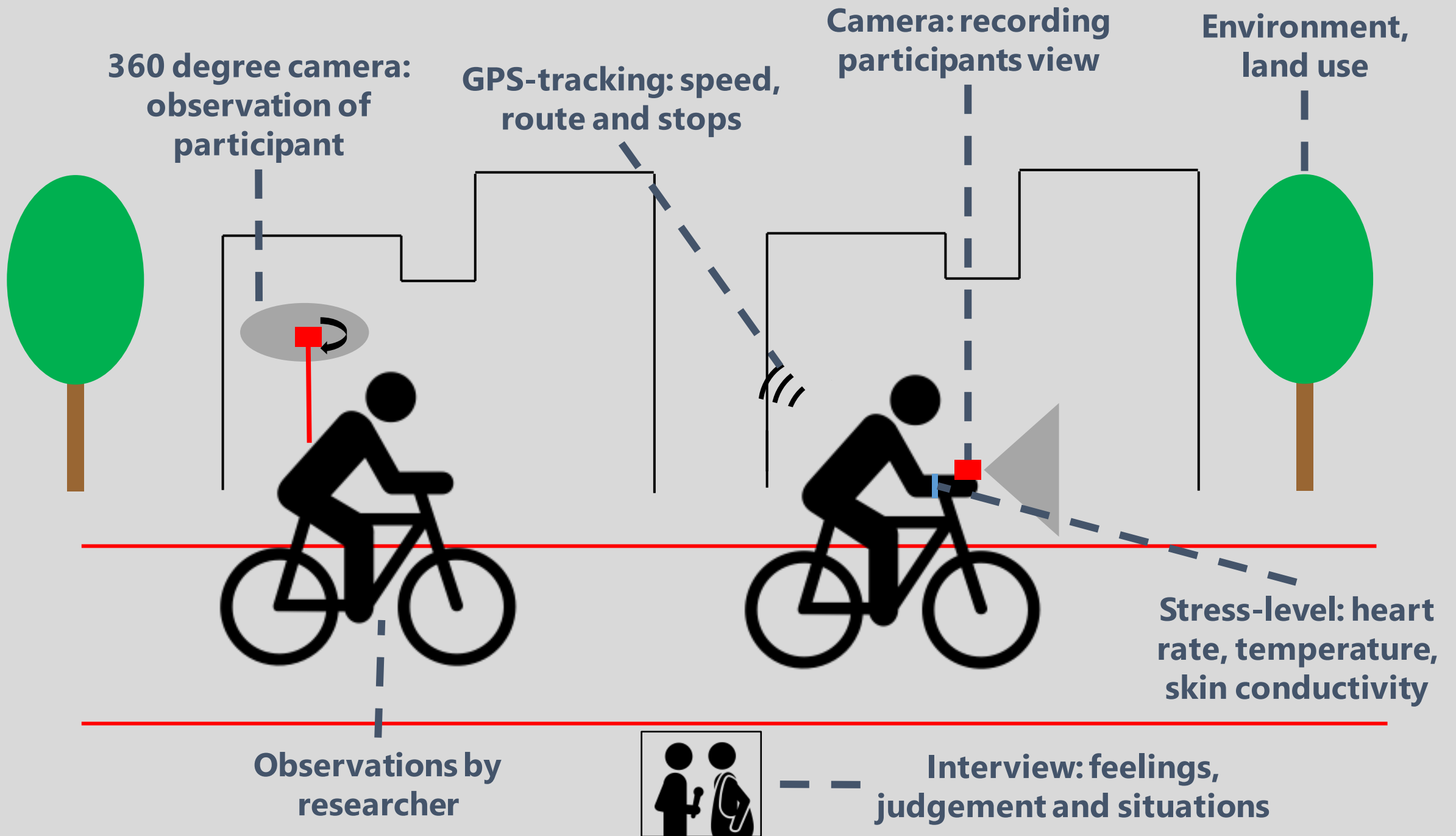
A practical way of gaining insights to build more user friendly cycle highways

Lisette Hoeke | Breda University of Applied Sciences



Method

- Participant on a bike
- Observation by researcher
- Equipment to record and measure
- Combine with interview:
afterwards, in between or during cycling





Tilburg-Waalwijk (NL) case

- Test new wayfinding concepts
- Participants: 12
- Type of bike: e-bike
- Cycle track: 18 km cycle highway
- Before and after implementing new wayfinding



← Kaatsheuvel 2
Efteling 2

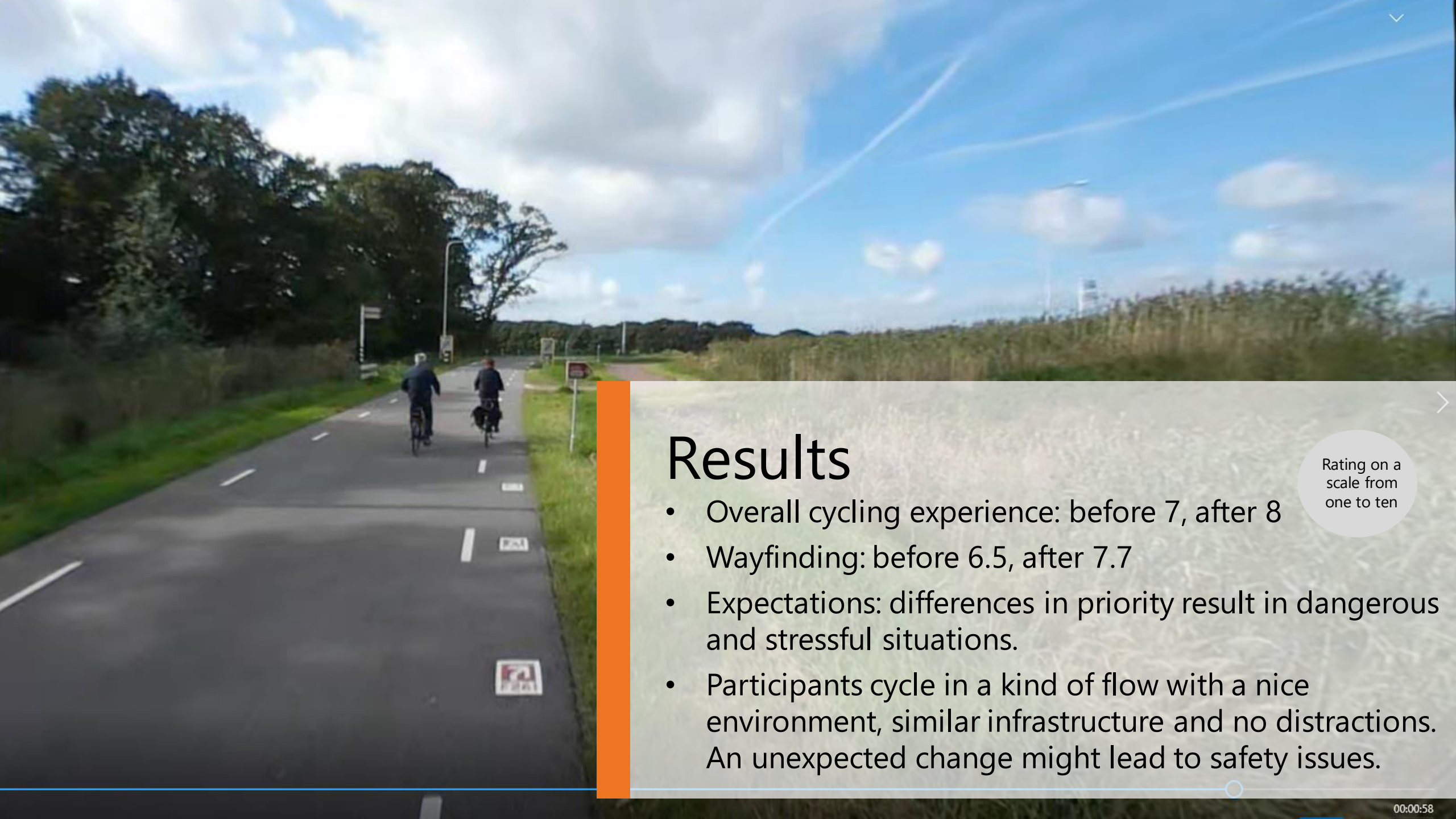
← Waalwijk 7

← Loonse en
Drunense Duinen

Loon op Zand 1
Tilburg 9 →

3687
029

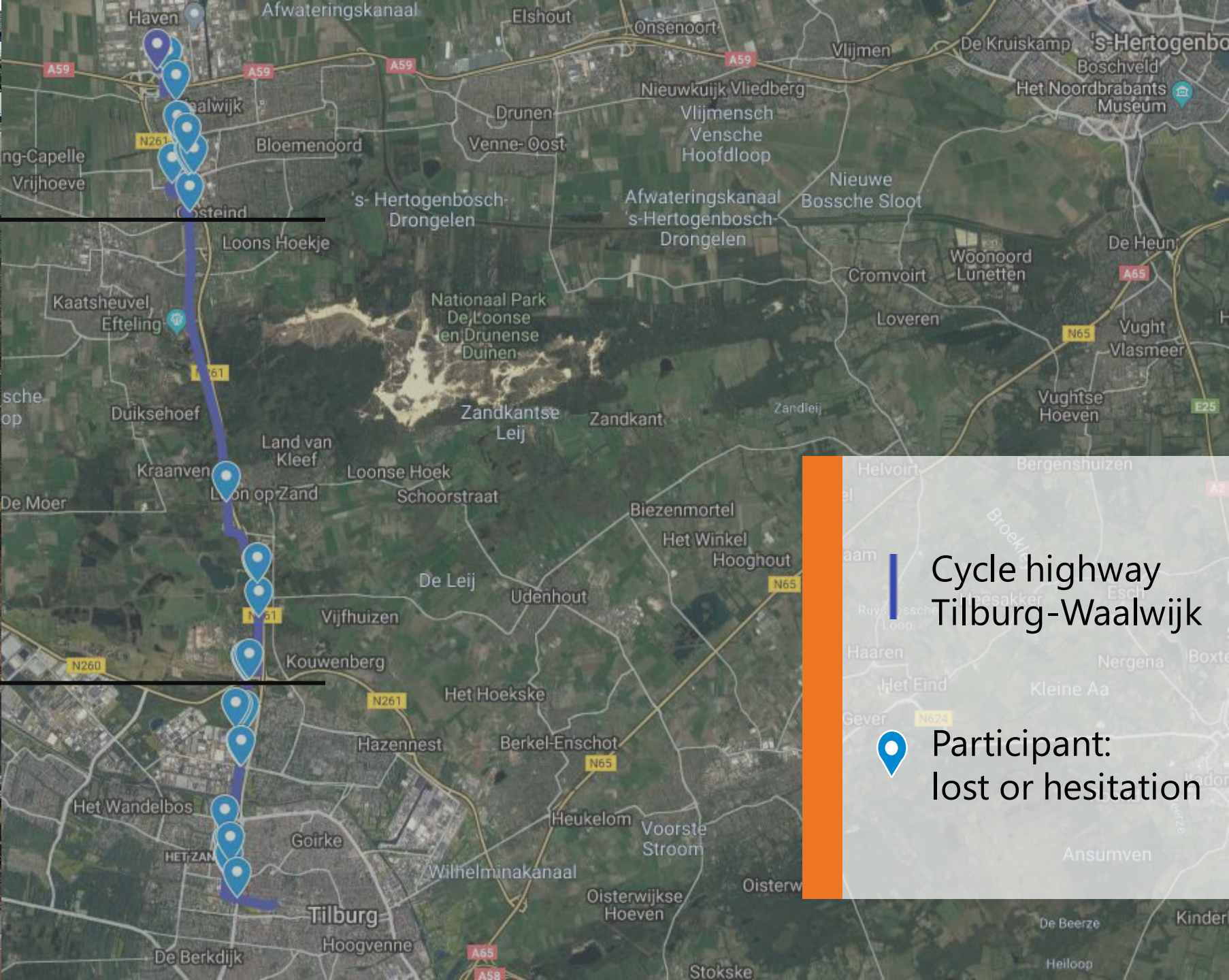




Results

- Overall cycling experience: before 7, after 8
- Wayfinding: before 6.5, after 7.7
- Expectations: differences in priority result in dangerous and stressful situations.
- Participants cycle in a kind of flow with a nice environment, similar infrastructure and no distractions. An unexpected change might lead to safety issues.

Rating on a scale from one to ten







Lisette Hoeke
Breda University of Applied Sciences

Hoeke.L@buas.nl

