



1. Where we come from
2. Paris strategy in cycling development
3. Redesigning public space
4. A policy strengthened by co-construction and partnership

Where we come from

# Where we come from...

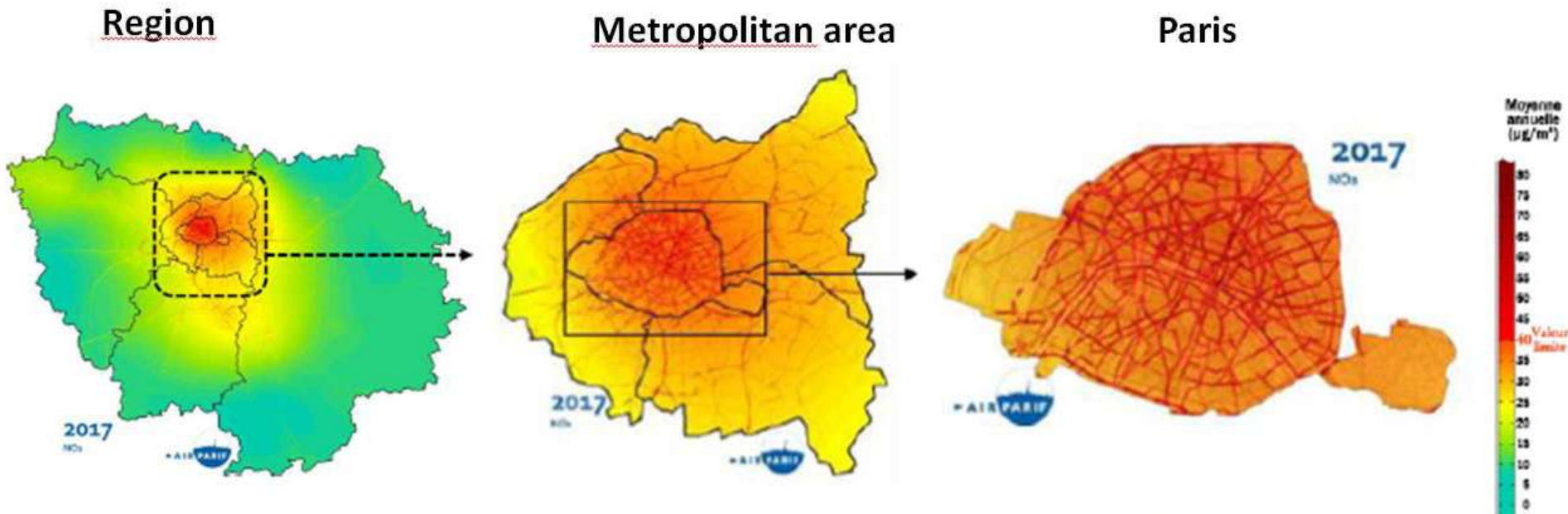
**1960-1970s' motto: "The city must adapt itself to cars"**



**1980-1990s' motto: "If Paris wants to drive, let's do it!"**

# Background

## Average NO2 concentration in 2017



	<u>Region</u>	<u>Metropolitan area</u>	<u>Paris</u>
<u>Inhabitant total</u>	12 000 000	7 000 000	2 200 000
<u>Inhabitant &gt; 40µg/m3</u>	1 300 000	1 300 000	1 000 000

# Background

**5% of journeys made using bike**

**2018/2019: +30% of cyclists counted using bicycle infrastructures**



# Paris cycling strategy

PARIS TRIPLE LE BUDGET VÉLO

## POUR 3X PLUS DE VÉLO À PARIS



**63**  
**millions €**  
pour l'aménagement  
de pistes cyclables



**40**  
**millions €**  
pour des aménagements  
cyclables dans le cadre  
des grands projets  
(places, transports  
en commun)



**30**  
**millions €**  
Double sens cyclable  
de l'ensemble des rues  
dans le cadre de la mise  
à 30 km/h de Paris  
(hors grands axes)



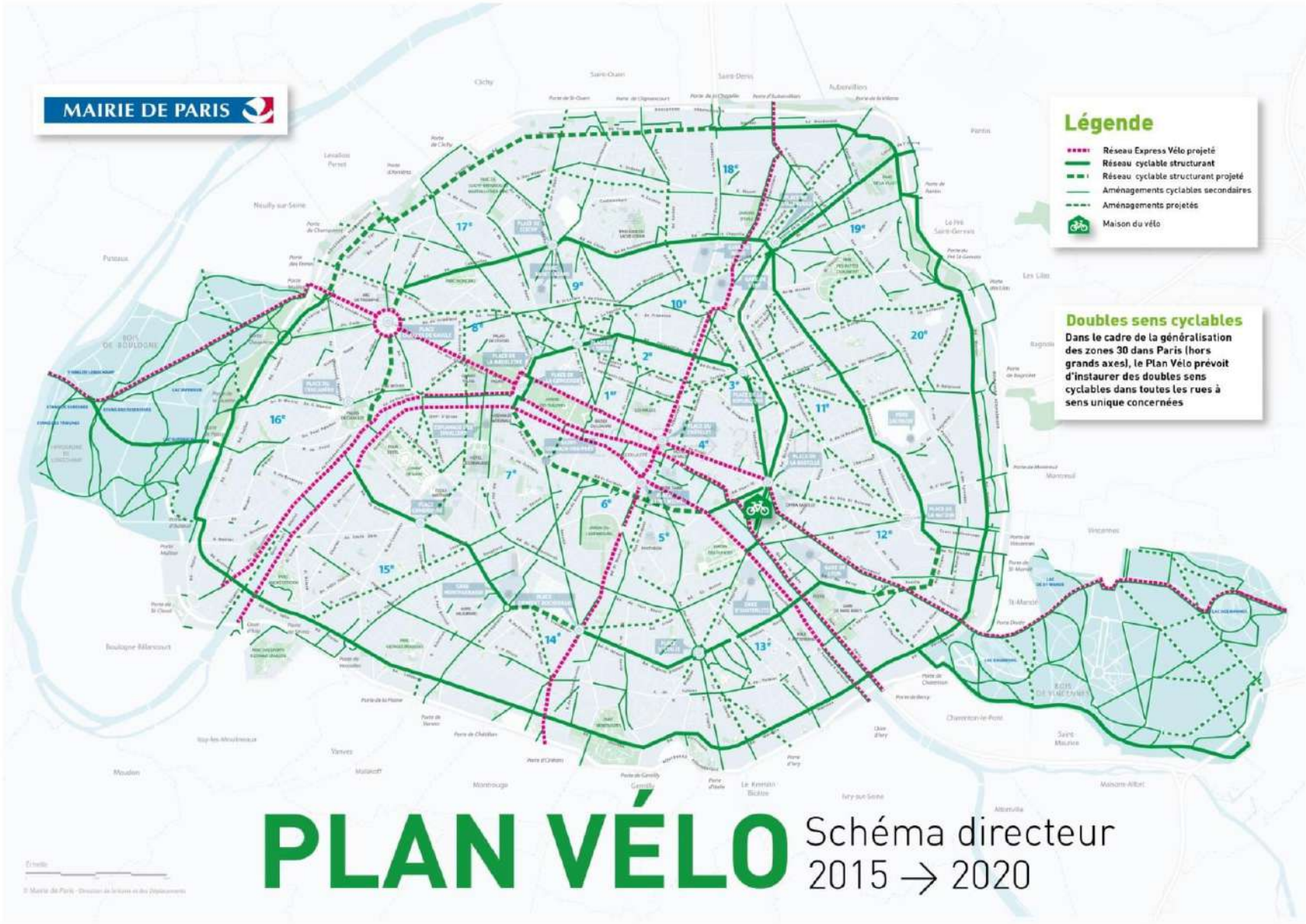
**7**  
**millions €**  
pour le stationnement  
des vélos  
(voirie et sécurisés)



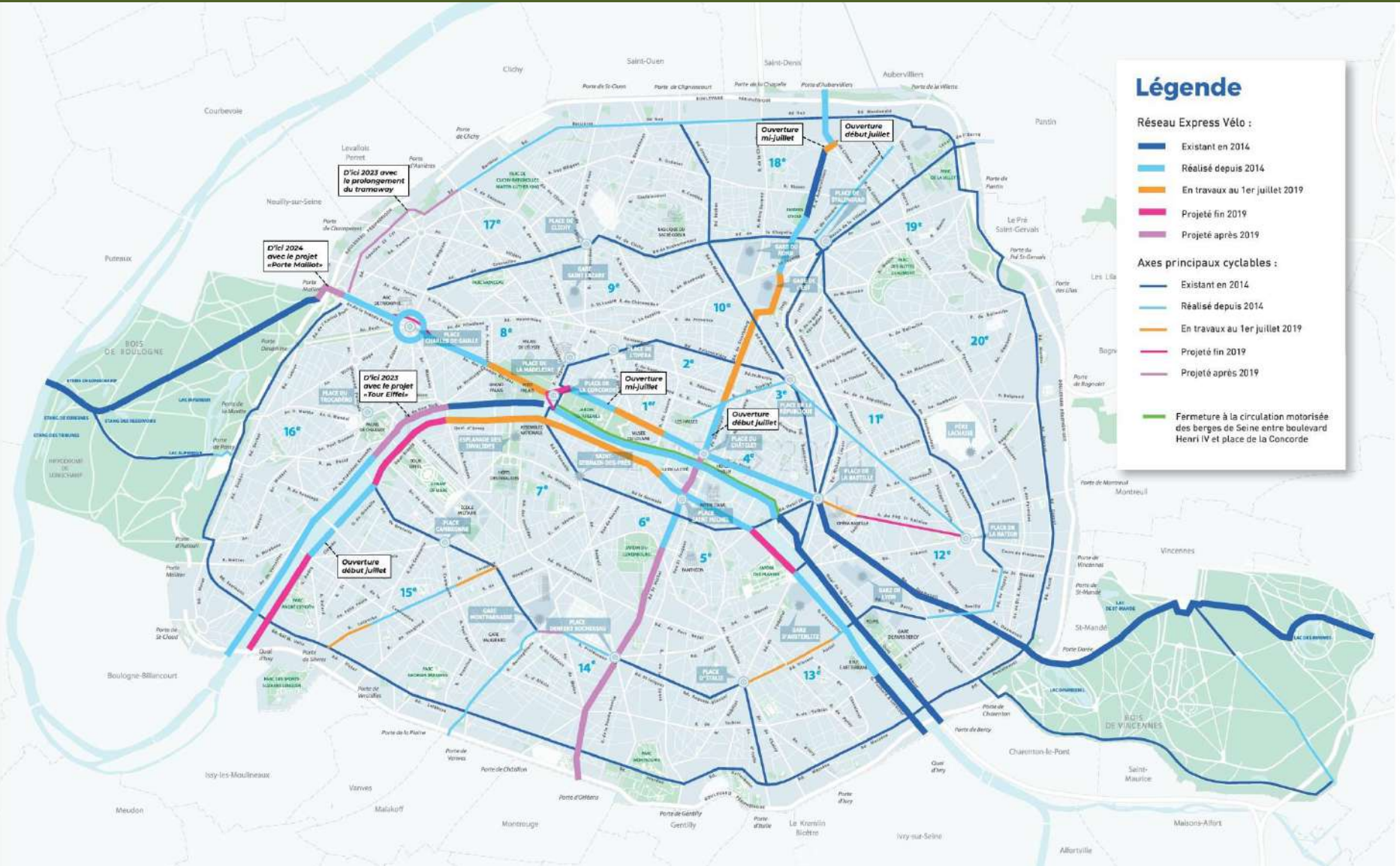
**10**  
**millions €**  
pour l'aide à l'achat  
de triporteurs  
et vélos cargos,  
électriques ou non



# Paris cycle plan 2015-2020



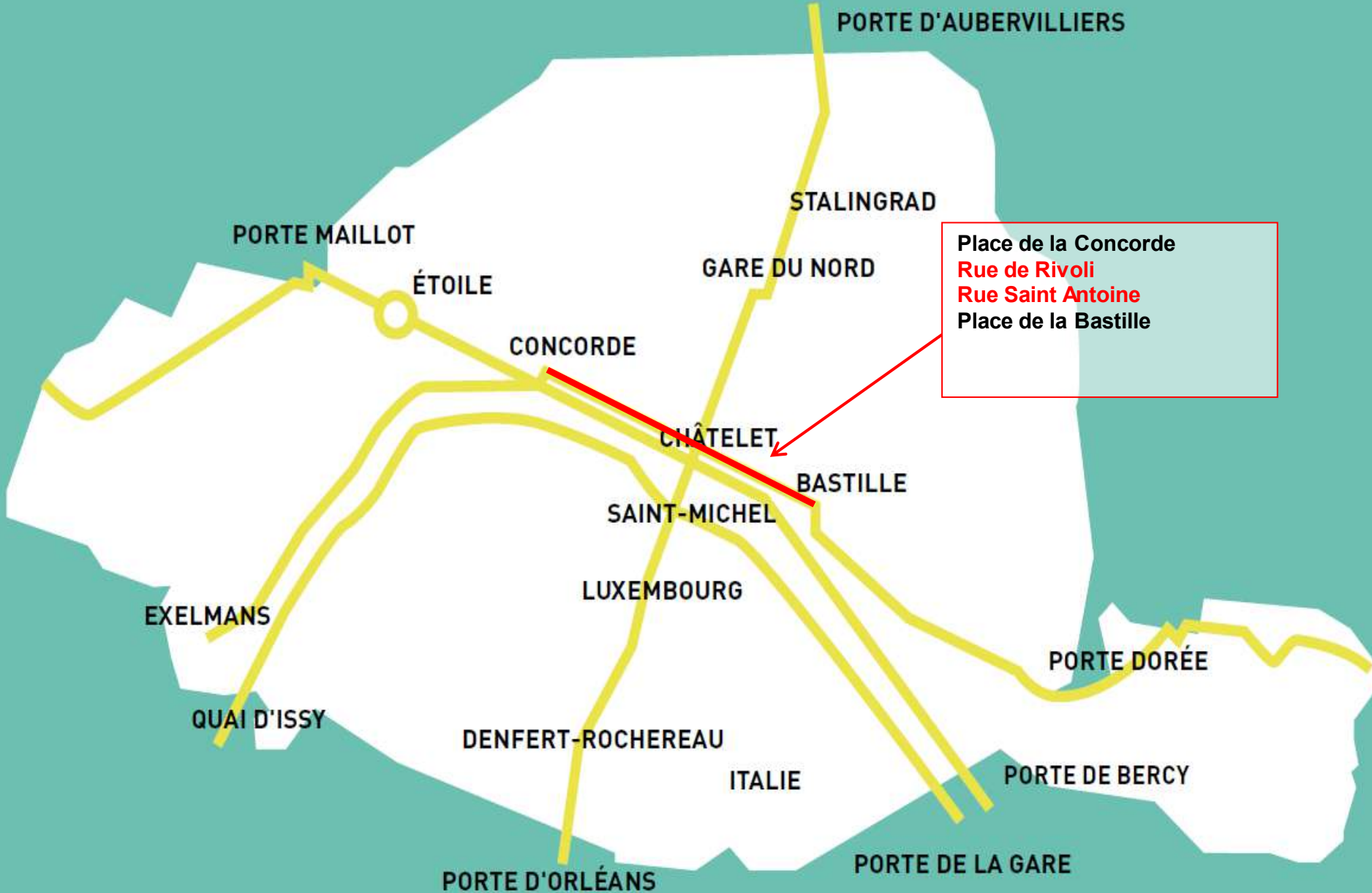
# Paris cycle plan 2015-2020



## Carte des axes principaux cyclables

Échelle  
© Mairie de Paris - Direction de la Vitesse et des Déplacements

# Cycling infrastructures



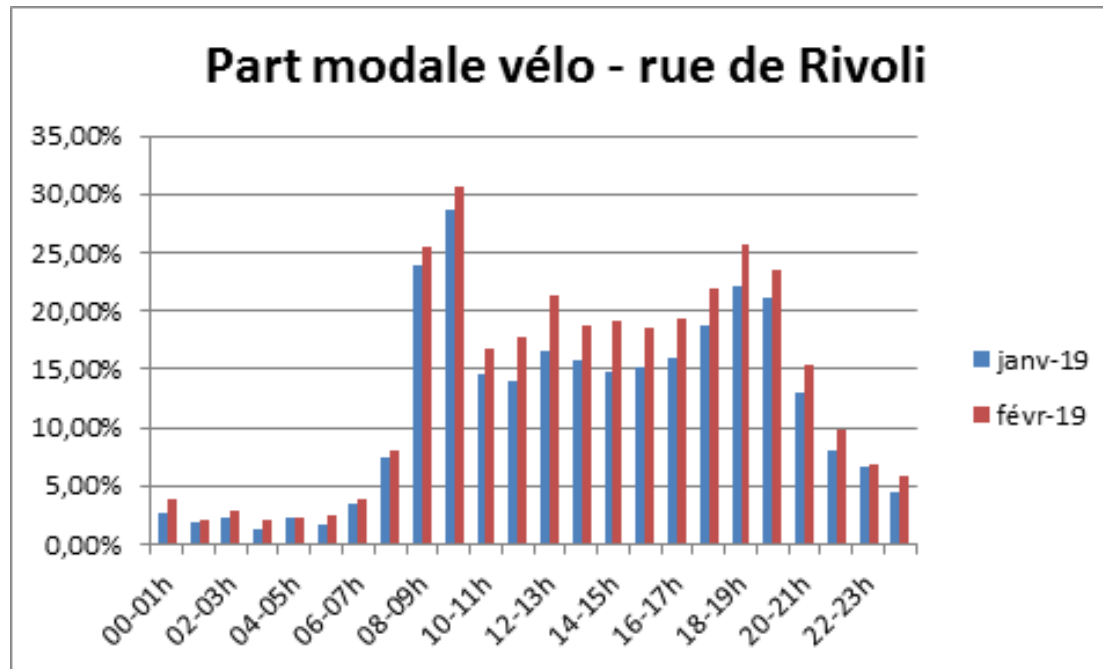
# Cycle Express Network : rue de Rivoli - before



# Cycle Express Network : rue de Rivoli - after



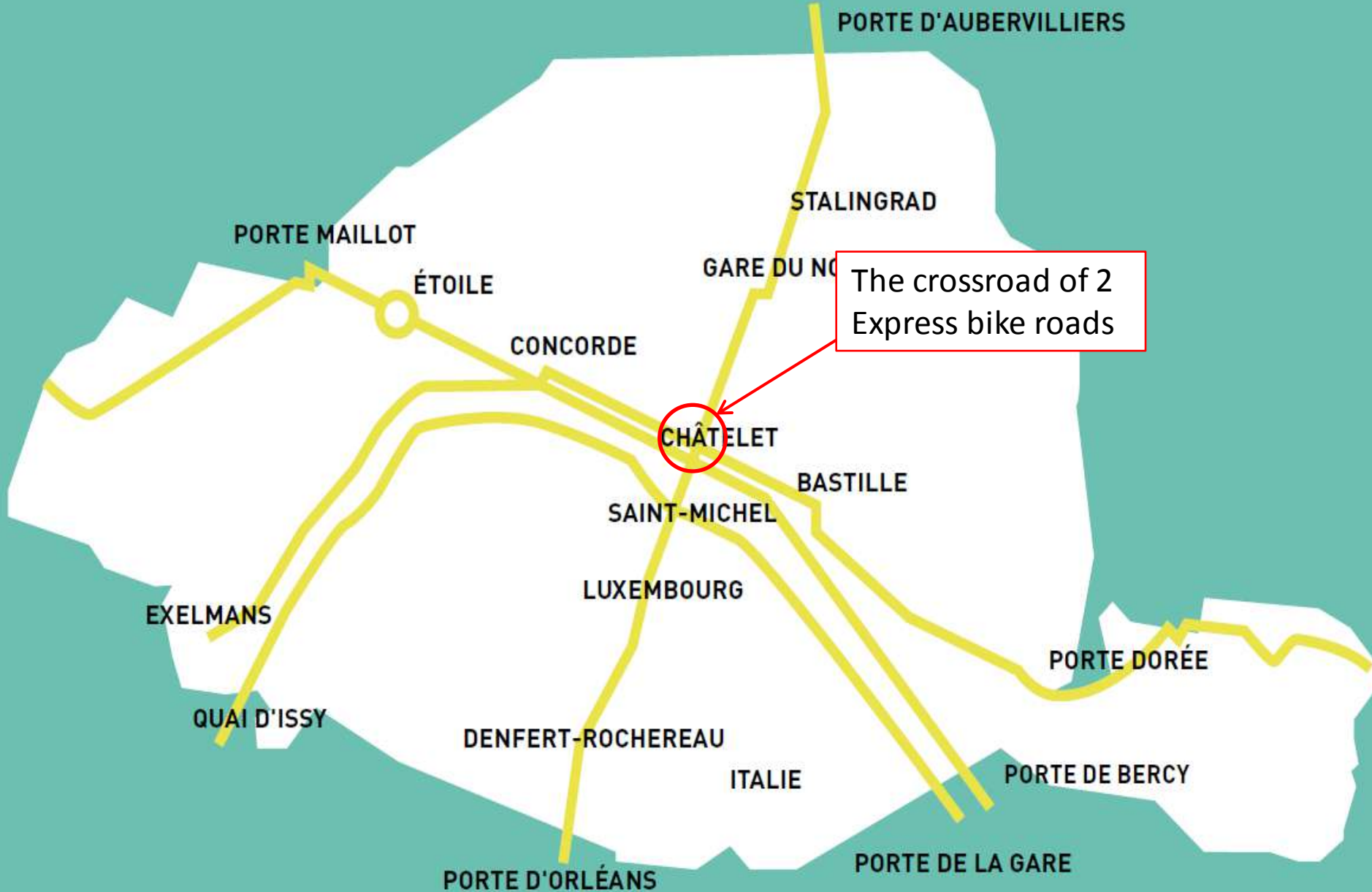
# Cycle Express Network : rue de Rivoli - figures



## Rue de Rivoli :

- **15 to 20% of traffic during the day** (without counting walkers)
- **Up to 30% during the morning rush hour**
- On average, on a week morning rush hour (between 9 and 10), we counted in February 247 bikes and 558 cars.

# Cycling infrastructures



# Cycle Express Network : the crossroad





# Contraflow bike lane

30 speed limit zones and against the flow of traffic cycle lanes covering the whole city by 2020  
Share road zones to be developed



# Speed limits and shares roads

30 speed limit zones and against the flow of traffic cycle lanes covering the whole city by 2020  
Share road zones to be developed



# Traffic code amendments

Right to go through a red light in some cases in order to turn right or go straight



# Security

7 000 advanced stop lines for bicycles



# Parking amenities

Foster inter-modal commutes

Create new secured offers for bike parking : Vélo-boxes  
+ 10 000 bike parking spaces



# Foster bike culture



**PARTICULIERS**

**Pour tous les parisiens**

**Une subvention jusqu'à 4 ♥ ♥ € pour l'achat d'un vélo ou cyclomoteur à assistance électrique**

A graphic with a blue background. It features a yellow bicycle wheel at the top, a yellow hand icon on the right, and a yellow bicycle wheel at the bottom. The text is in white and yellow. There are also small white stars scattered around the text.

# Support the associations



# The Velib Experience

**2018 : launch Velib 2**

**20 000 bikes soon in 2019. 30% of them are electric assist bikes**

**Expansion to 37 new metropolitan territories ( 67 municipalities overall)**





# The Velib Experience



# Redesigning public space

# Redesign public space – the Seine riverbanks

A riverbank turned into a motorway, then turned into a park



Left bank pedestrianized in 2013  
Right bank in 2016

More than 1000 cyclists per hour  
on week mornings!

# Redesign public space – Rue du Château 14<sup>e</sup> arr.



# Redesign public space – Terre-plein Vaugirard 15è arr.



# Redesign public space – Porte d'Italie



# Redesign public space – Transforming major squares



# Redesign public space – Place de la Bastille



- + 11 000 m<sup>2</sup> of pedestrian space
- + 48 trees
- + a bidirectional cycle path





# Sharing public space through time

PARIS 

Il existe forcément un quartier Paris Respire près de chez vous.



-  Zones permanentes
-  Zones Paris Respire\*
-  Zones estivales\*
-  Zones Paris Respire mensuel  
Tous les 1<sup>er</sup> dimanche du mois

\* les dimanches de 10h à 20h et jours fériés en fonction des zones.



# Sharing public space through time

Champs Elysées without cars, one Sunday a month



# Car free day

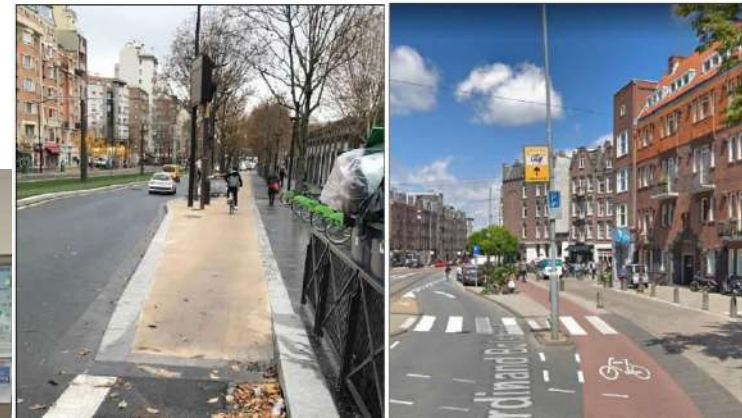


A policy strengthened by  
co- construction and partnership

# Co-constructed policies



comme ce que prévoit le projet), à niveau du trottoir (cas des « pistes en extension de trottoir »), ou à un niveau intermédiaire, celui que nous préconisons (cf dernier paragraphe). Par ailleurs, la transition entre les deux n'a nul besoin de se faire par une bordure de trottoir, une pente abrupte et une coloration différente, comme sur la partie récemment inaugurée.



# Support (from?) the associations



# National networks



MAIRIE DE PARIS



## JOURNÉE D'ÉCHANGES NATIONALE

Carrefours à feux :  
vers de nouvelles pratiques  
pour une ville  
des mobilités actives !



CLUB DES **villes**  
& **territoires**  
**cyclables**

Mardi  
**6 novembre**  
2018

**Paris**

Auditorium  
de l'Hôtel de Ville

 **vélo &**  
**territoires**

COORDINATEUR DU RÉSEAU NATIONAL CYCLABLE

# International networks

- Exchange best ideas & practices
- Help members committing to bike-related objectives
- Legitimate local policies



C40  
CITIES

POLIS

CITIES AND REGIONS FOR  
TRANSPORT INNOVATION



**Our Commitment to  
Green and Healthy Streets**



Thank you!

