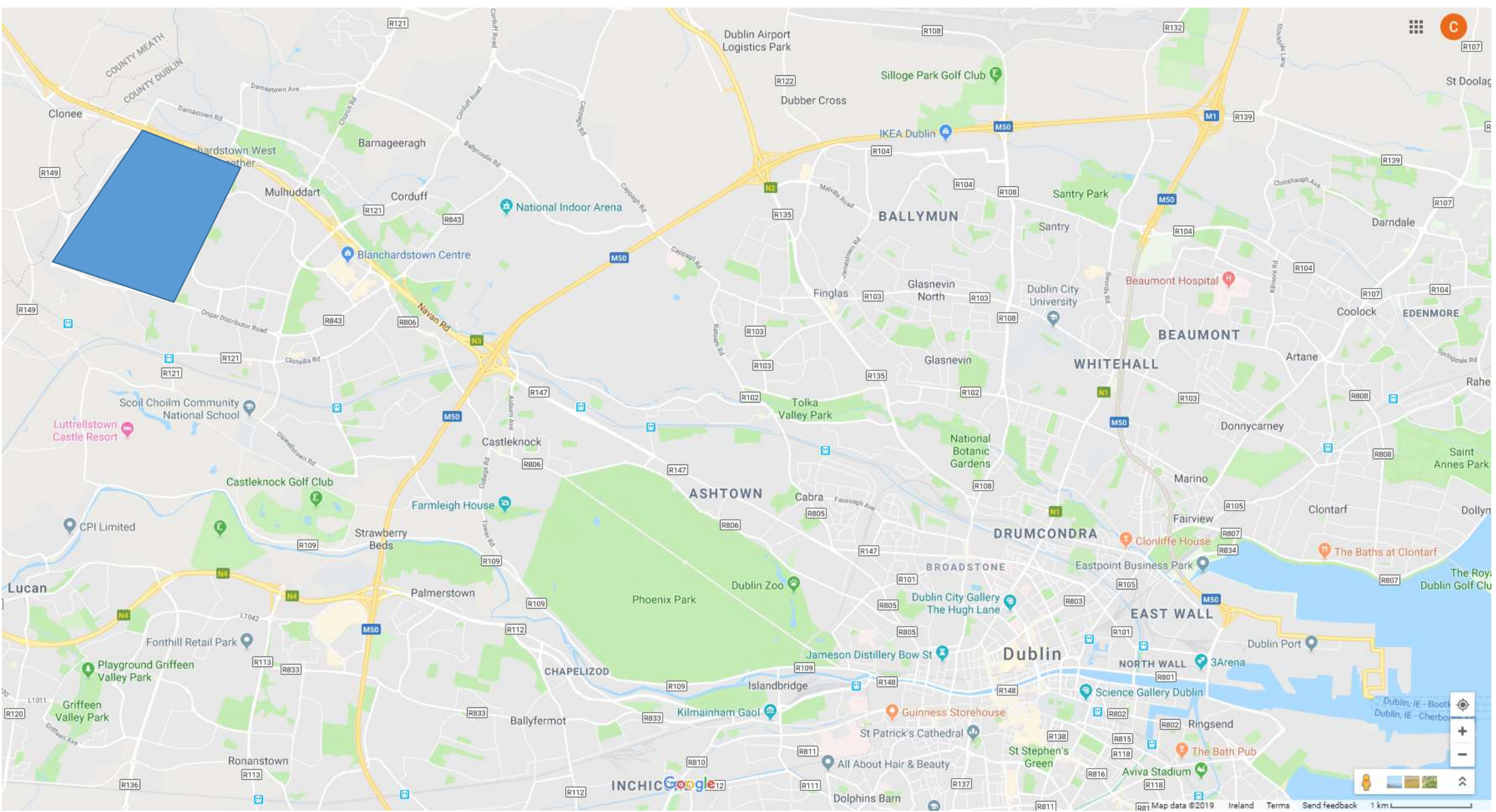




# Ongar Castaheany Cycle Network Scheme – 5 years on we go back to school

Velo-city 2019

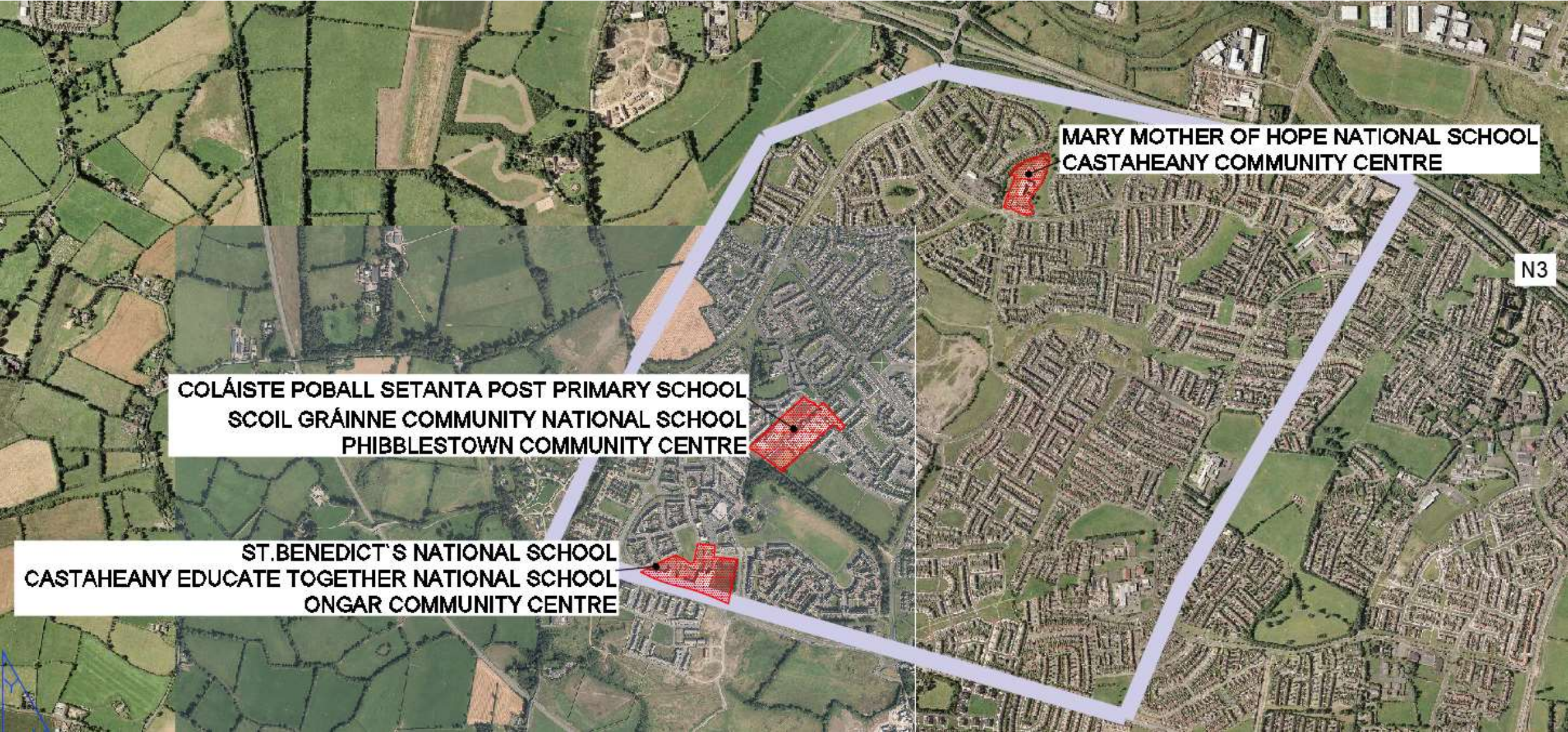
Caroline Butler, Clifton Scannell Emerson Associates Consulting Engineers











MARY MOTHER OF HOPE NATIONAL SCHOOL  
CASTAHEANY COMMUNITY CENTRE

COLÁISTE POBALL SETANTA POST PRIMARY SCHOOL  
SCOIL GRÁINNE COMMUNITY NATIONAL SCHOOL  
PHIBBLESTOWN COMMUNITY CENTRE

ST. BENEDICT'S NATIONAL SCHOOL  
CASTAHEANY EDUCATE TOGETHER NATIONAL SCHOOL  
ONGAR COMMUNITY CENTRE

N3







# NATIONAL CYCLE MANUAL

[www.cyclemanual.ie](http://www.cyclemanual.ie)

The Basics

Legislation and Policy

Planning for the Bicycle

Designing for the Bicycle

Getting the Details Right

Maintenance

Tools and Checklists



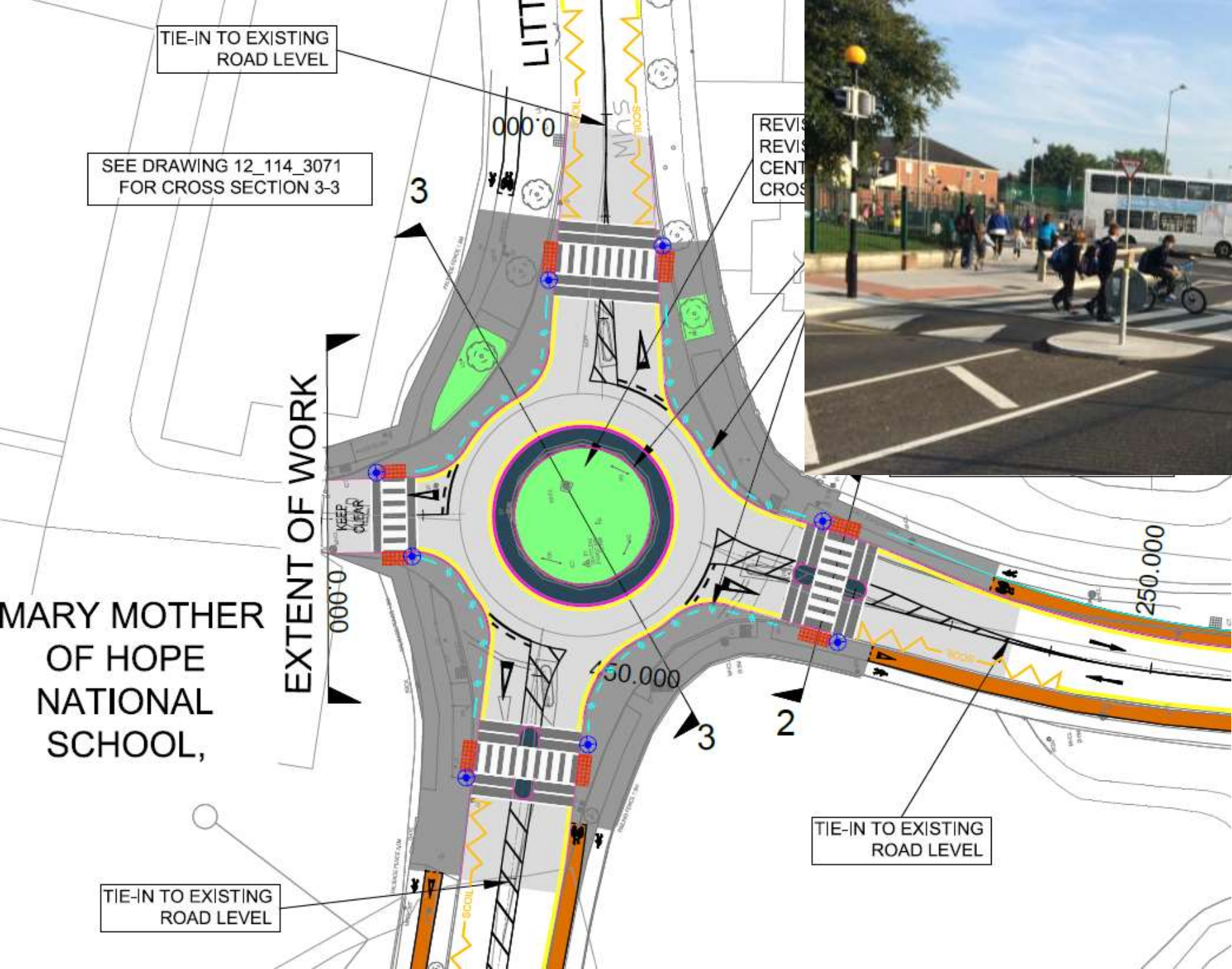
# Design Manual for Urban Roads and Streets



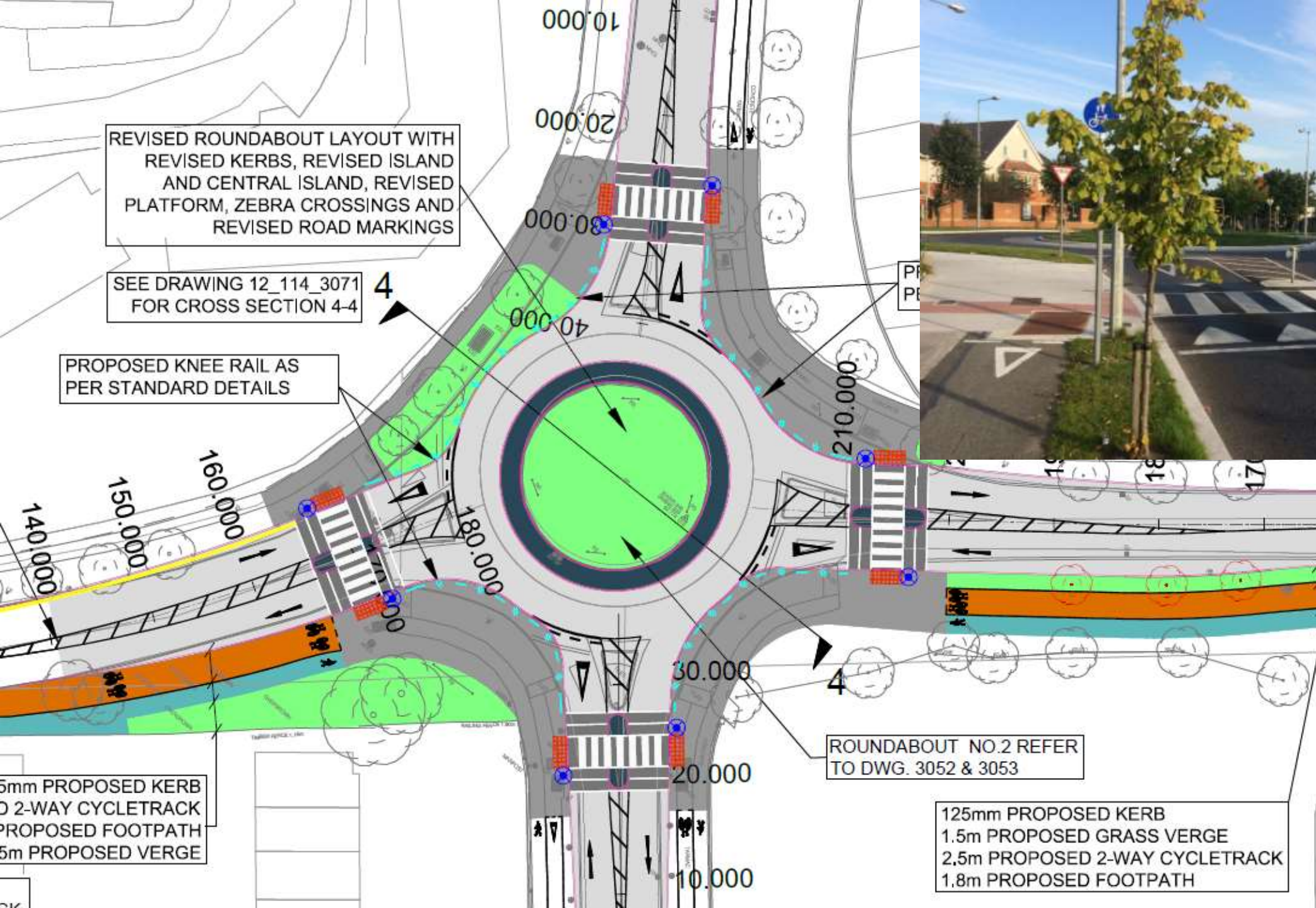
An Roinn Iompair  
Turasóireachta agus Spóirt  
Department of Transport,  
Tourism and Sport



Comhshóil, Pobal agus Rialtas Áitiúil  
Environment, Community and Local Government



















**Before**



**After**





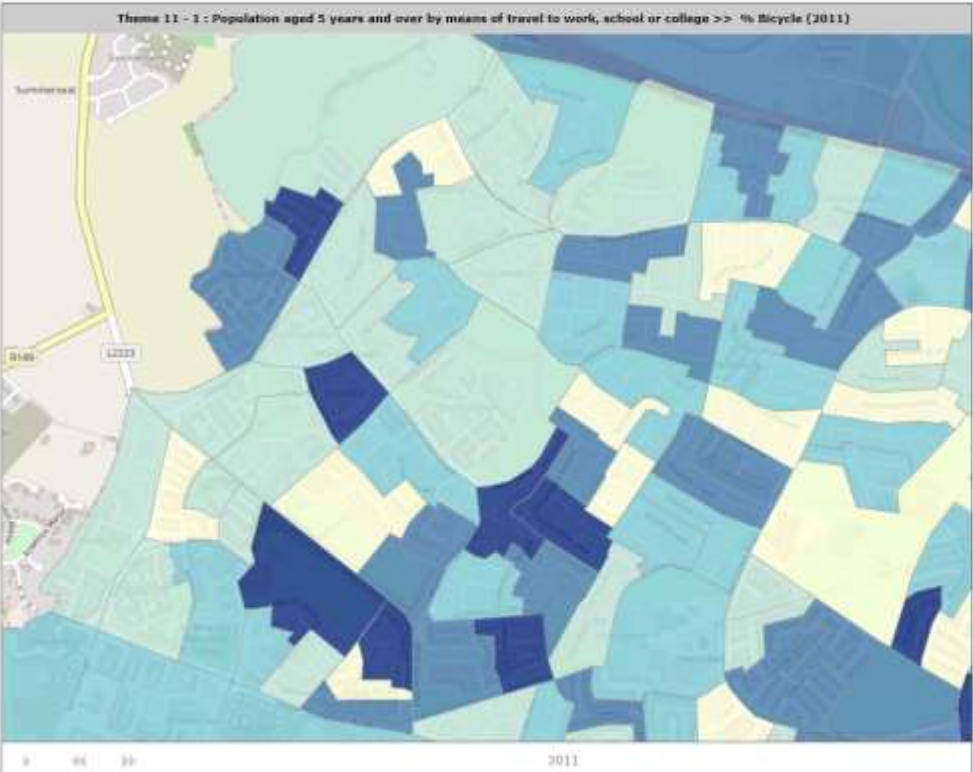




# Census Mapping Module: Fingal

both  
rsity  
iversity  
rsity

Change Data



**Legend**

- Small Areas
- 0.0 - 0.8
- 0.9 - 1.6
- 1.7 - 2.4
- 2.5 - 3.2
- 3.3 - 10.3
- Small Areas
- Electoral Divisions
- County Boundary
- OpenStreetMap

**Name**

- Eastern and Midlands Planning Region
- Fingal
- National

15  
10  
5  
0



**Legend**

- Small Areas
- 0.0 - 6.9
- 7.0 - 11.4
- 11.5 - 16.5
- 16.6 - 23.1
- 23.2 - 53.8
- Small Areas
- Electoral Divisions
- County Boundary
- OpenStreetMap

**Name**

- Eastern and Midlands Planning Region
- Fingal
- National

60  
40  
20  
0



**Legend**

- Small Areas
- 24.4 - 48.1
- 48.2 - 54.6
- 54.7 - 60.1
- 60.2 - 66.7
- 66.8 - 89.8
- Small Areas
- Electoral Divisions
- County Boundary
- OpenStreetMap

**Name**

- Eastern and Midlands Planning Region
- Fingal
- National

100  
80  
60  
40  
20









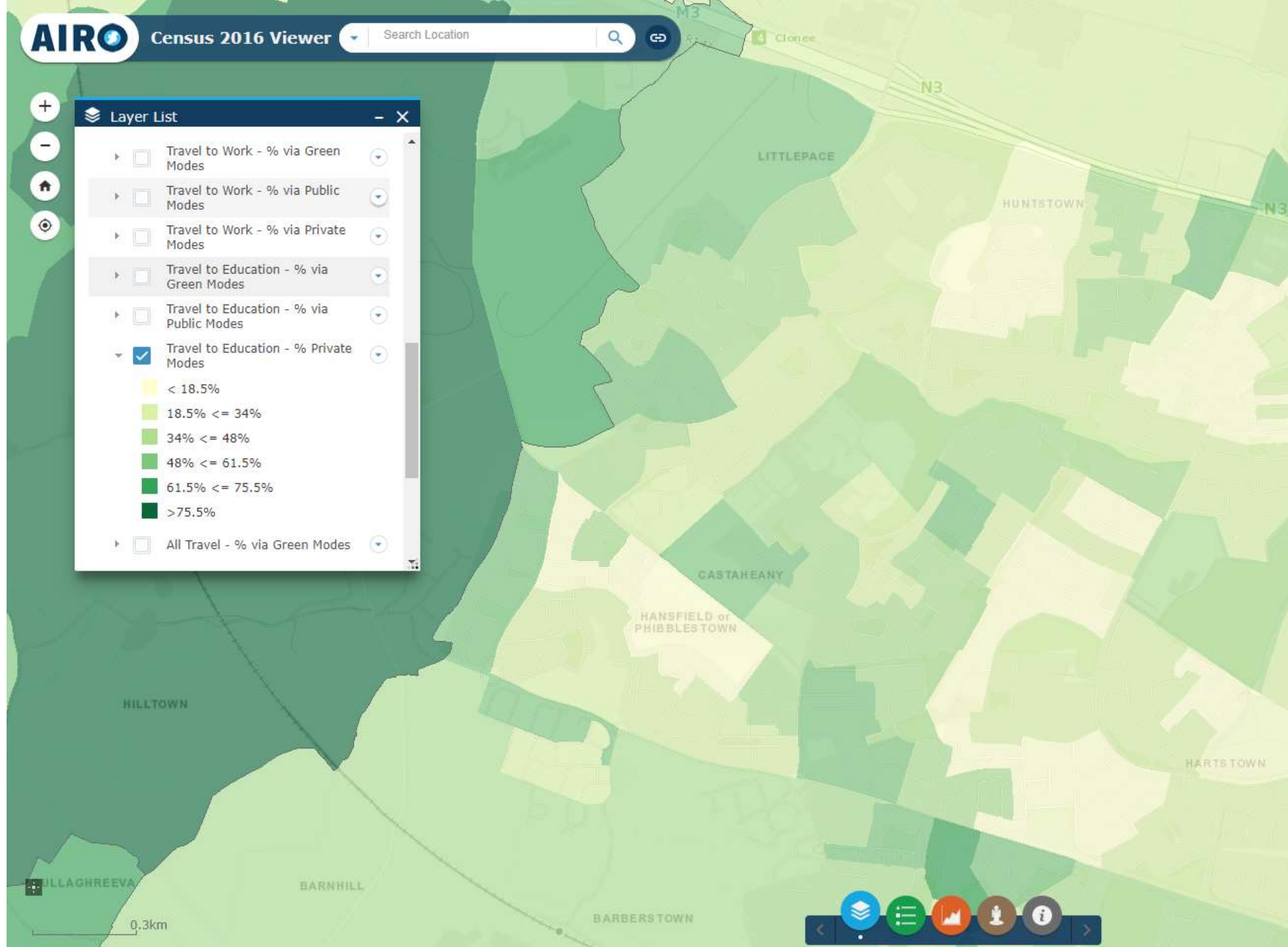
**Layer List** [Close]

- Travel to Work - % via Green Modes
- Travel to Work - % via Public Modes
- Travel to Work - % via Private Modes
- Travel to Education - % via Green Modes
- Travel to Education - % via Public Modes
- Travel to Education - % Private Modes

Legend for Travel to Education - % Private Modes:

- < 18.5%
- 18.5% <= 34%
- 34% <= 48%
- 48% <= 61.5%
- 61.5% <= 75.5%
- >75.5%

All Travel - % via Green Modes



0.3km

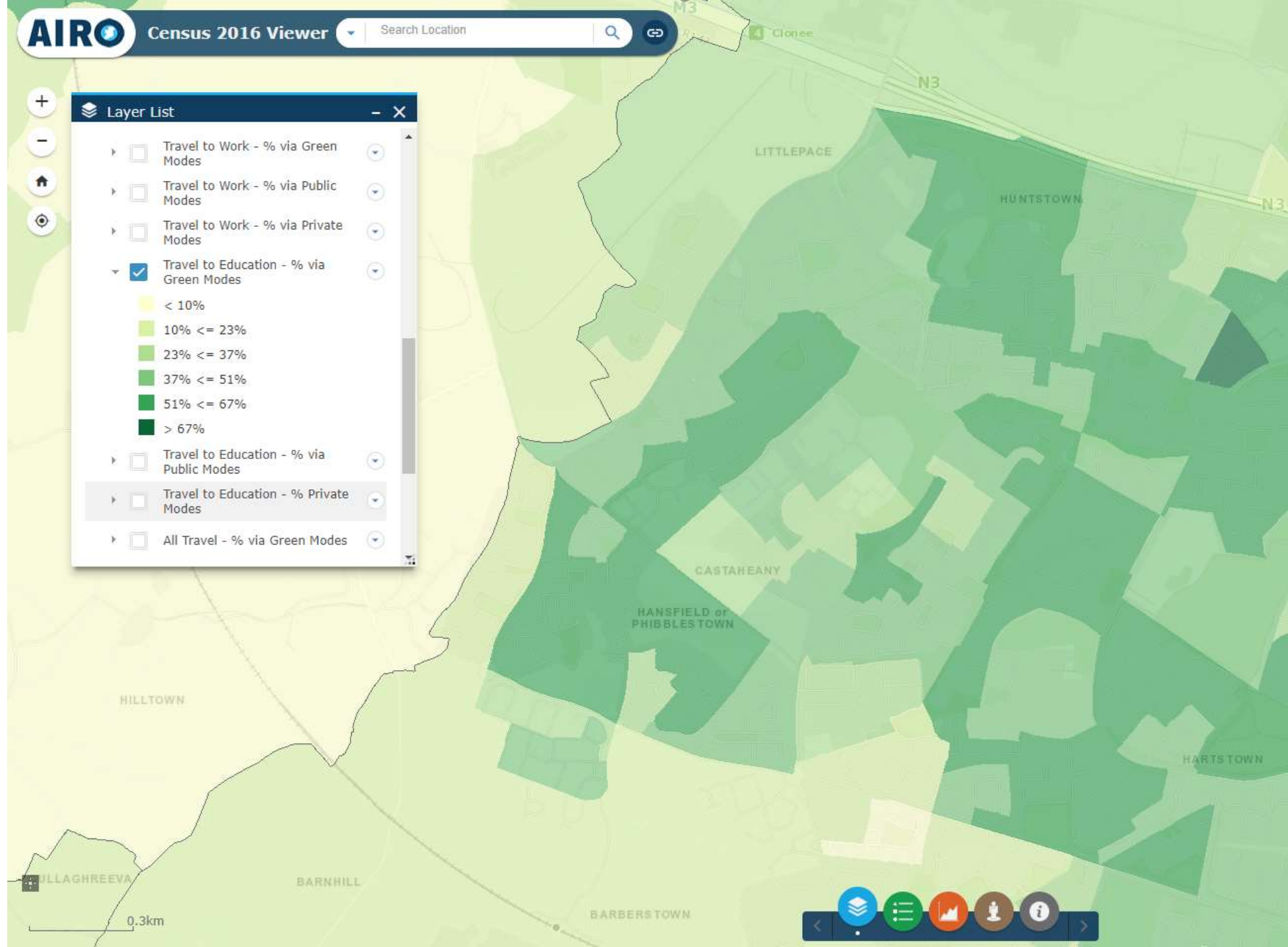






**Layer List** - X

- Travel to Work - % via Green Modes
- Travel to Work - % via Public Modes
- Travel to Work - % via Private Modes
- Travel to Education - % via Green Modes
  - < 10%
  - 10% <= 23%
  - 23% <= 37%
  - 37% <= 51%
  - 51% <= 67%
  - > 67%
- Travel to Education - % via Public Modes
- Travel to Education - % Private Modes
- All Travel - % via Green Modes



HILLTOWN

LITTLEPACE

HUNTSTOWN

CASTAHEANY

HANSFIELD or PHIBBLES TOWN

BULLAGHREEVA

BARNHILL

BARBERSTOWN

HARTSTOWN

0,3km

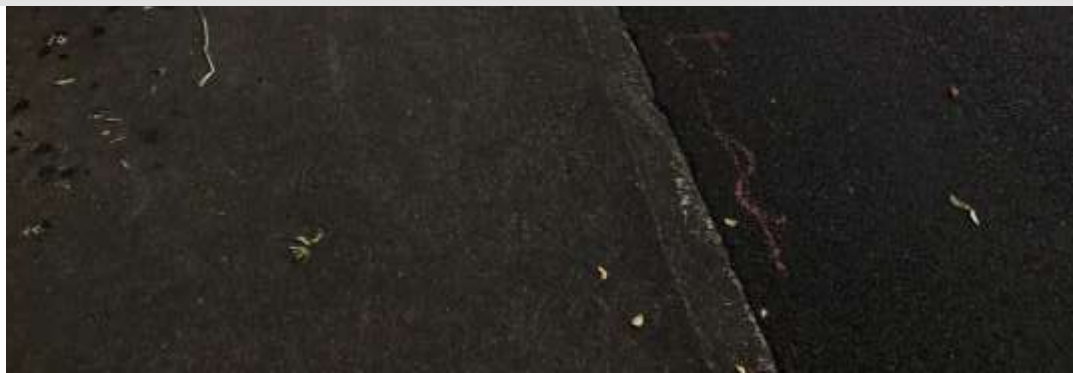






## Data from schools 2019:

- 50 – 59.3% travel by foot
- 3.7 – 15% travel by bike, scooter, skateboard, flicker
- 14.8 – 35% travel by car (28.8 – 35% when park and stride is included)







## When surveyed:

- 44.4% of students said their preference would be to cycle
- 40% said having a friend to travel with would be their main motivation to make the change







**Clifton Scannell Emerson**  
Associates



