

# The UK National Cycle Network: Creating cycling infrastructure for all ages

Velo-City 2019 Session 9E  
Will Haynes



# Sustrans



Sustrans is the UK charity making it easier for people to walk and cycle.



**Happier,  
healthier people**



**Greener, better  
local  
environments**



**Stronger  
economies  
and communities**

# Growth of the National Cycle Network

<b>1979</b>	Start of construction of the Bristol and Bath Railway Path by volunteers
<b>1985</b>	160 km of route
<b>1995</b>	500 km of route National Cycle Network launched £42.5m National Lottery grant secured
<b>2000</b>	8,000 km of route
<b>2005</b>	17,200 km of route
<b>2019</b>	26,650 km of route



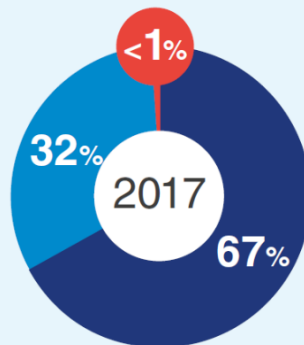
View of the Bristol and Bath Railway Path



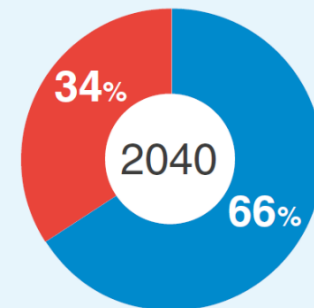
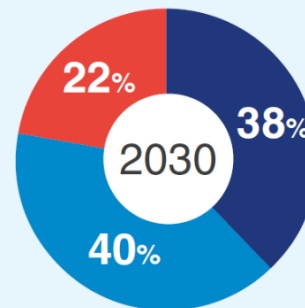
# The Network in the future

A UK-wide network of traffic-free paths for everyone, connecting cities, towns and countryside, loved by the communities they serve.

## The vision for the Network by 2040



BASELINE



● on-road miles    ● traffic-free miles    ● quiet-way miles

Percentage of Network

# Realising the vision

## Run it

Governance and stakeholder liaison

## Fix it

Make it safer and accessible for everyone

## Grow it

Creating a better network

## Love it

Community involvement at the heart of the Network

## Fund it

Seek funding to realise the vision





## What do users want?

30%



of people think cycling safety in their city is good and only **21%** think safety of children's cycling is good

77%



think safety needs to be improved for cycling in their city

64%

of residents would cycle more if more roadside cycle routes were created, physically separated from traffic

78%

of people support building more protected roadside cycle lanes, even when this could mean less space for other road traffic, including **74%** of residents who do not ride a bike



# What do users need?

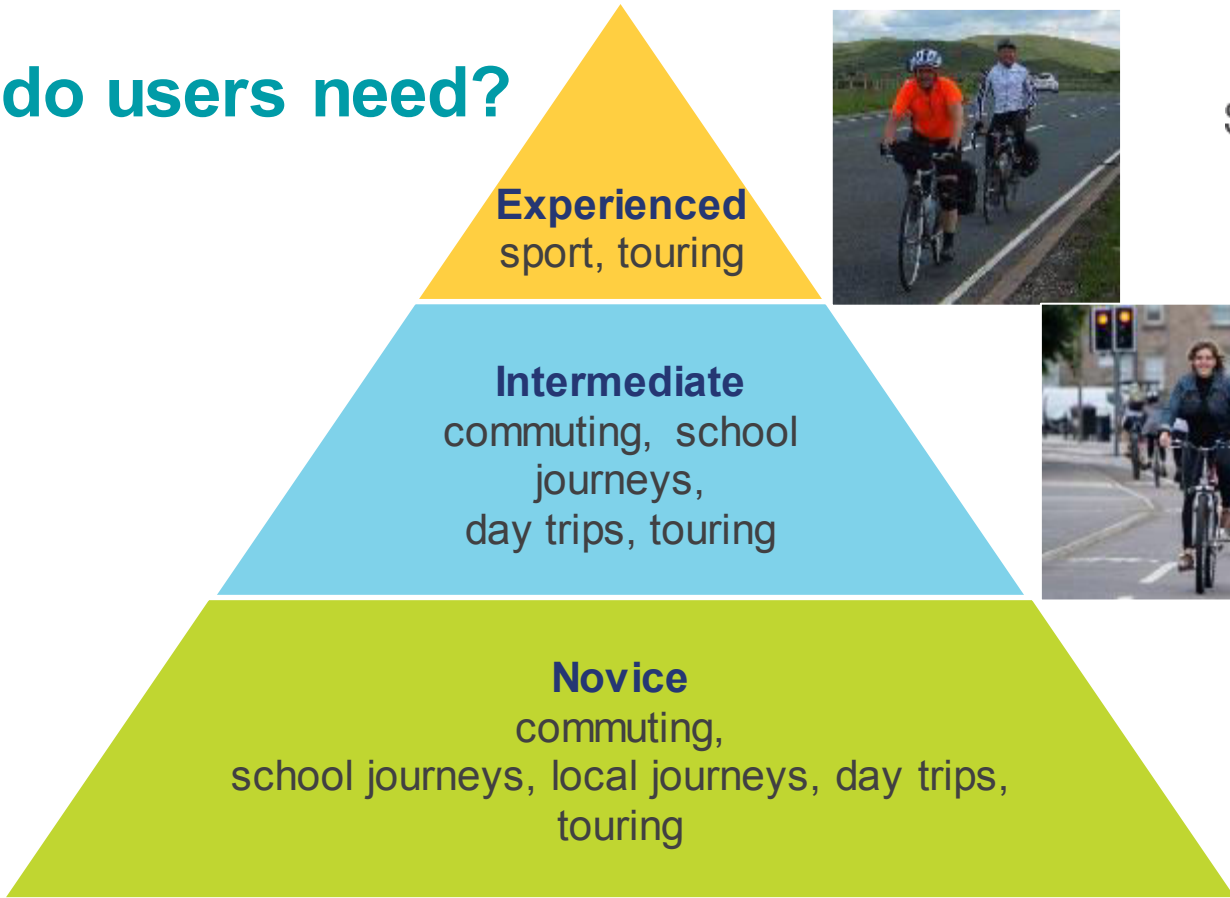


Hostile

Infrastructure



Friendly





# Who should we design for?

## Everyone...

Very difficult to define.

## 8 to 80...

Again a wide range of different people.

## An sensible 12 year old travelling alone...

What does a sensible 12 year old look like?



A sensible 12-year old?

# Design principles

The National Cycle Network design principles set out the key elements that make the Network distinctive and that need to be considered during the design of new and improved routes forming part of the Network.

- designed in accordance with best practice design guidance.
- designed in collaboration with the local community.



9 design principles

# The National Cycle Network Audit

During 2015 and 2016 we audited the National Cycle Network:

- recorded key characteristics including surface type, width, lighting, barriers and signage;
- created a snapshot of the condition of the Network;
- provides a level of understanding and overview that has never been available before and will be hugely beneficial for future decision-making.



Audit carried out using handheld devices

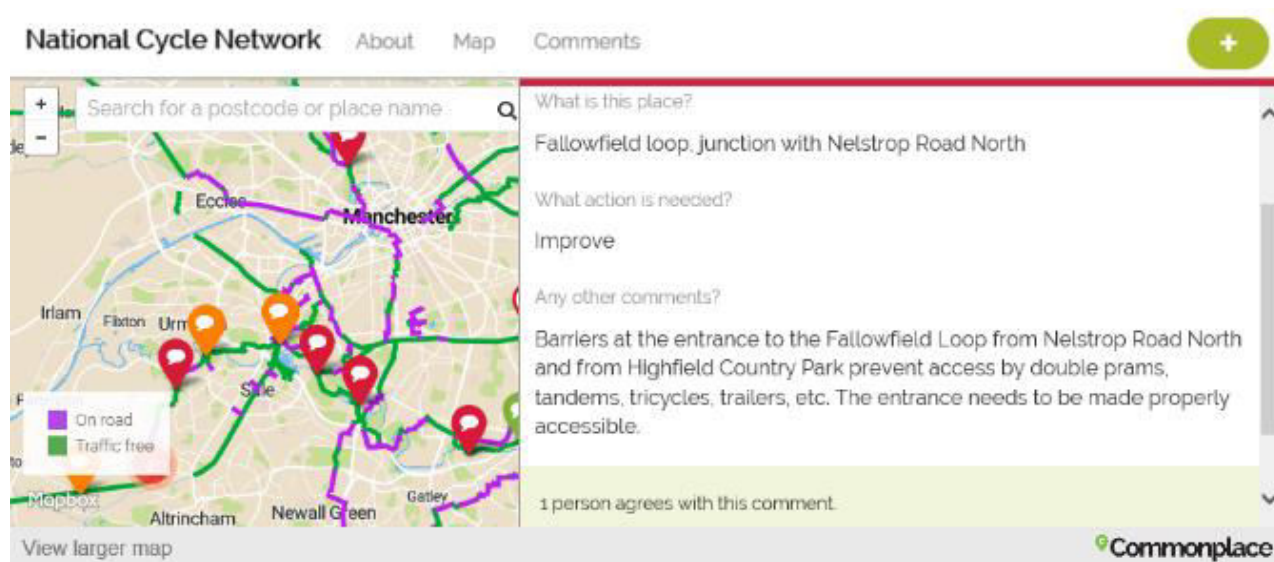
# The National Cycle Network Survey

## Online survey

Completed by 6,000 people.

## Online map

Used for people to record their comments on specific sections of the network.



The screenshot displays the 'National Cycle Network' website interface. At the top, there are navigation links for 'About', 'Map', and 'Comments', along with a green plus icon in a circle. Below the navigation is a search bar with the placeholder text 'Search for a postcode or place name'. The main content area is split into two panels. The left panel shows a map of Manchester and surrounding areas, with various cycle routes highlighted in purple (labeled 'On road') and green (labeled 'Traffic free'). Several red location pins are placed on the map. The right panel shows a comment form with the following fields: 'What is this place?' (filled with 'Fallowfield loop, junction with Nelstrop Road North'), 'What action is needed?' (filled with 'Improve'), and 'Any other comments?' (filled with 'Barriers at the entrance to the Fallowfield Loop from Nelstrop Road North and from Highfield Country Park prevent access by double prams, tandems, tricycles, trailers, etc. The entrance needs to be made properly accessible.'). Below the comment text, it says '1 person agrees with this comment.' At the bottom right of the interface, there is a 'Commonplace' logo.

# The National Cycle Network Review

## Honest review of the network

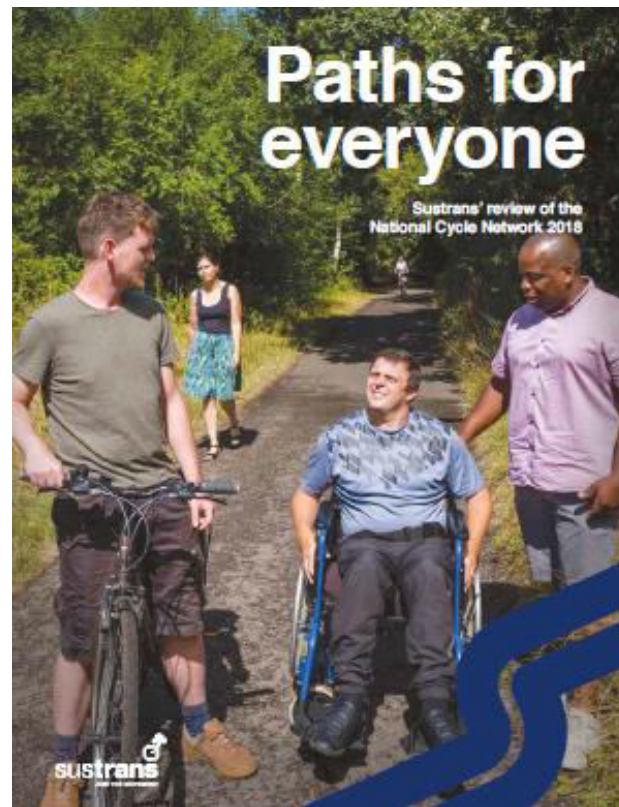
“We’ve had enough of the crap bits and want to make it fit for everyone” (*Xavier Brice, article in the Sunday Times 11 November 2018*).

## 15 recommendations

Delivering on these recommendations will transform the National Cycle Network.

## 50 activation projects

These projects will test new approaches and demonstrate how the vision can be realised, the first project has already been completed.





# Network Development Plans

Our teams are reviewing the network and creating a Network Development Plan for every mile.

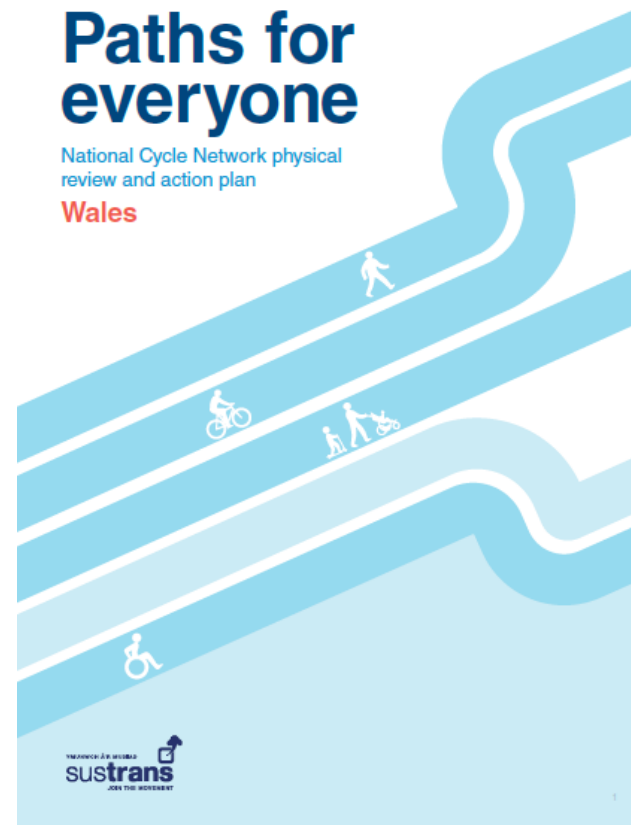
Working with stakeholders, partners and local communities we will identify how best to address the issues, including:

- creating new traffic-free routes;
- realigning routes onto more suitable routes;
- removing some sections of network where improvements cannot realistically be made.

## Paths for everyone

National Cycle Network physical review and action plan

Wales



# Design by younger people

## The Big Street Survey

A curriculum resource created by Sustrans to help school pupils investigate their local area, consider what is good and bad, then produce a manifesto for change which they can send to their MP.



The Big Street Survey in action

# Creating age friendly infrastructure

## Age Friendly Tyburn, Birmingham

a project looking at creating a more 'age-friendly' neighbourhood for people by making it easier to get around.

Toolkit to help people identify the barriers to them being able to enjoy their local environment.

Discover Develop Design Discover Legacy



Getting the community to identify barriers

Sustrans is the charity making it easier for people to walk and cycle.

We connect people and places, create liveable neighbourhoods, transform the school run and deliver a happier, healthier commute.

Join us on our journey.

[www.sustrans.org.uk](http://www.sustrans.org.uk)

Registered Charity No. 326550 (England and Wales) SC039263 (Scotland)  
VAT Registration No. 416740656.

