



# Infrastructure and Cycling



Anne Graham, Chief Executive Officer  
June 2019

# NTA: What we do....

## Bus, Rail & Light Rail Services



## Taxi & Bus Licensing



## Investment Projects



## Integration & Technology



## Transport Planning & Policy



## Personal Travel Choices



smarter travel >>>  
>>> campus

smarter travel >>>  
>>> workplaces

# Strategic Transport Planning

- Developed evidence-based strategic plans
  - ✓ Transport Strategy for the Greater Dublin Area 2016-2035
  - ✓ Framework for investment
  - ✓ Informed National Development Plan
  - ✓ **Integrated approach** for various sustainable transport modes, including cycling

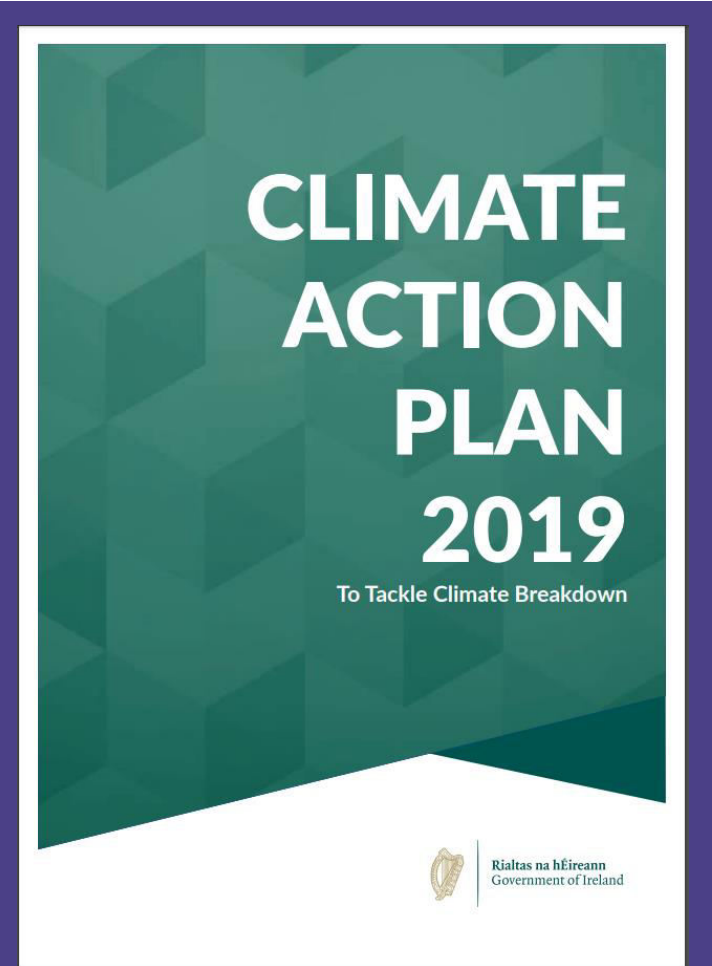




**Project Ireland 2040**  
*Building Ireland's Future*



# National Development Plan 2018 - 2027



**BUS  
CONNECTS**

TRANSFORMING CITY BUS SERVICES



**Project Ireland 2040**  
*Building Ireland's Future*



**Údarás Náisiúnta Iompair**  
National Transport Authority

# BusConnects



# BUS CONNECTS

TRANSFORMING CITY BUS SERVICES



Project Ireland 2040  
Building Ireland's Future



Údarás Náisiúnta Iompair  
National Transport Authority



Core Bus Corridors  
providing continuous bus  
priority



Redesign of  
Network of Bus  
Services



State-of-the-art  
Ticketing System



Simpler Fare  
Structure



Cashless Payment  
System



Park & Ride  
facilities



New Bus Livery



New Bus Stops  
+ Shelters



Use of Low  
Emission Vehicles

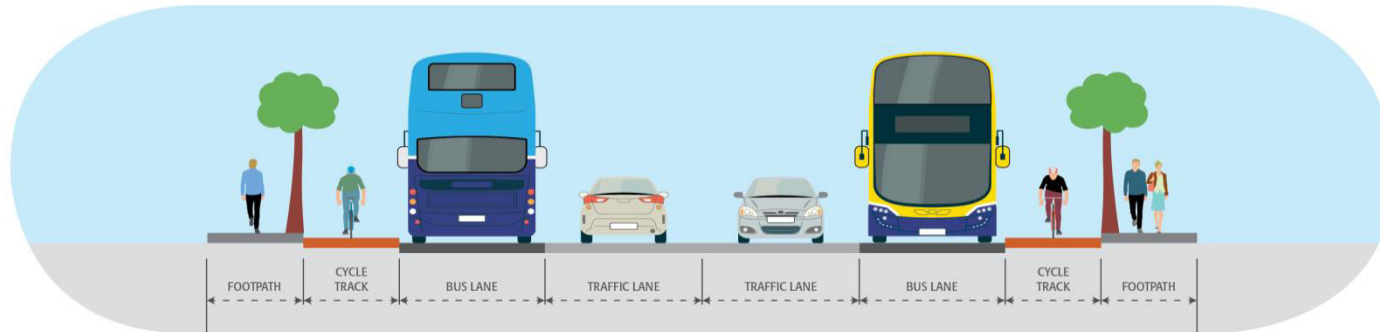
# Phased approach for publication and consultation

- 4 corridors shown in green published on 14<sup>th</sup> November 2018 and consultation closed on 29<sup>th</sup> March 2019
- 6 corridors shown in blue published on 23<sup>rd</sup> January 2018 and consultation until 30<sup>th</sup> April 2019
- Final 6 corridors in red published in mid- February and consultation closing end May 2019



# Target Road Layout

Optimum Road Layout



However, Dublin's roads and streets make it challenging to deliver this layout.

To achieve dedicated bus lanes & cycle tracks requires difficult decisions, including:

- Loss of portions of gardens and driveways
- Traffic changes
- Reduction of on-street parking
- Removal of trees

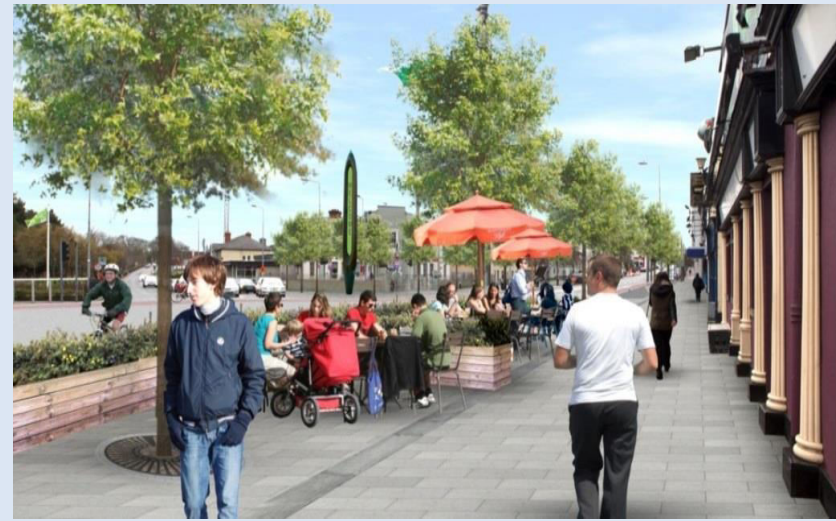


# The Benefits for Cycling and Urban Centres

- **Cycling:** BusConnects is the single biggest cycling infrastructure plan in the history of the state – 200kms of cycle tracks/lanes
- **Greater Dublin Area Cycle Network Plan:** Delivery of the BusConnects corridors will provide the foundation of the overall Greater Dublin Area cycle network plan.
- **Improved urban centres:** opportunity to enhance some local centres and provide additional landscaping



**200kms of cycle track/lanes  
to be provided**





# Cycling Investment



Anne Graham, Chief Executive Officer  
June 2019

# Strategic Investment

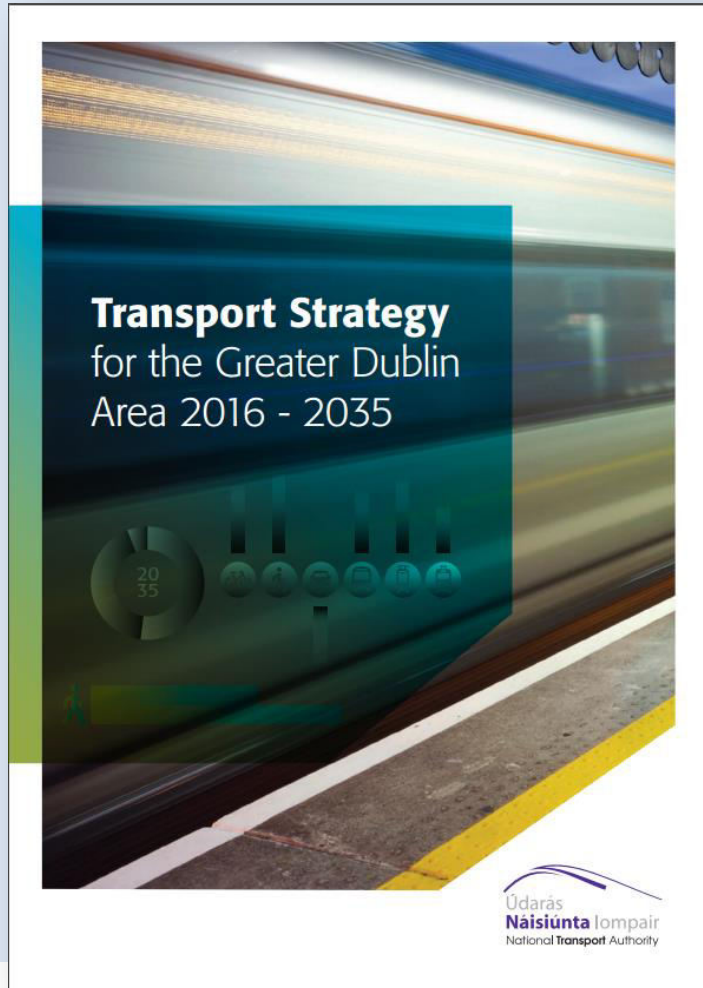
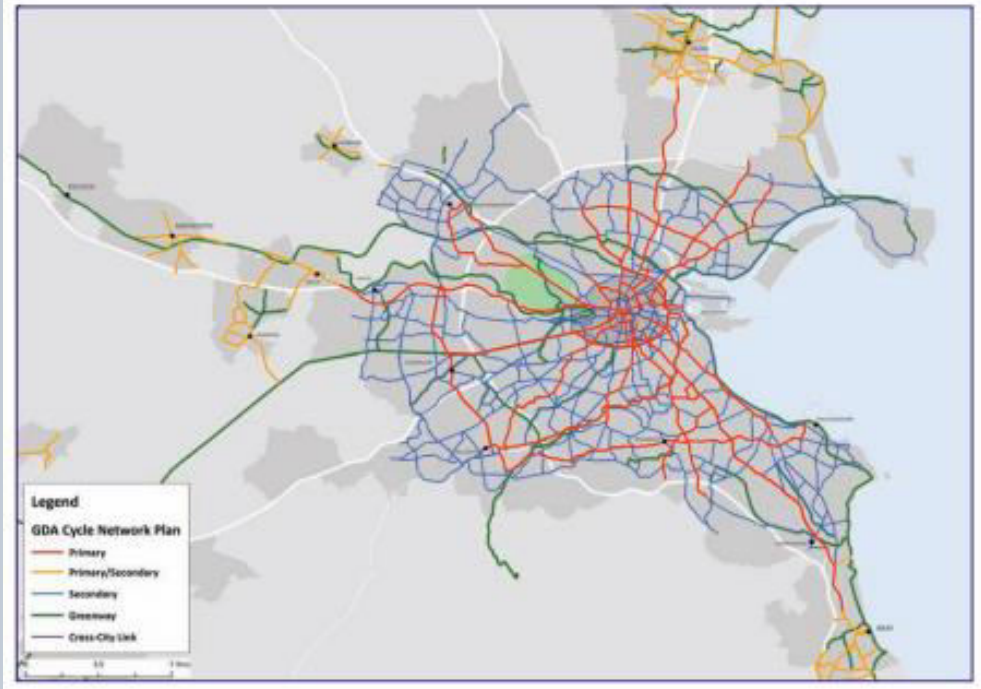


Figure 5.10 – Metropolitan Cycle Network





- Deliver **Cycle Network**
- On-street cycle **parking**
- **Off-street** public cycle parking,
- Expansion of **dublinbikes**
- Similar **bike share schemes** in centres
- Cycle route **signage**
- Cycle **training**;
- Promote **safe cycling behaviour**
- **Deterrence of parking** on cycle lanes and cycle tracks.



# Expenditure History

- NTA cycling investment routed through Transport Development Division;
- Total expenditure 2011—2018 on sustainable transport was in excess of €250m;
- Of which Cycling Investment (inc. some pedestrian facilities) is over €120 Million, or 47% of total investment;

# Cycling Infrastructure Delivery 2011-2018

- Over 90 km of cycle tracks, greenways, cycle lanes
- Over 25 km of bus lane
- 385 junctions amended / adjusted / improved
- 6 Cycle-friendly roundabouts
- Over 3,300 cycle parking spaces
- 5 new bridges
- Public Bikes Schemes

# New Technical Guidance (2011)



Údarás Náisiúnta Iompair  
National Transport Authority

Stemap    Contact Us    About Us    Home

National Cycle Manual *Draft Test Phase*   



- The Basics**
- ▶ a) Sustainable Safety
- ▶ b) 5 Needs of Cyclists
- ▶ c) Conflict and Risks
- ▶ d) Quality of Service
- ▶ e) Width
- ▶ f) Link Types
- ▶ g) Integration and Segregation
- ▶ h) Right of Way
- Legislation & Policy**
- Planning for the Bicycle**
- Designing for the Bicycle**
- Getting the Details Right**
- Maintenance**
- Tools and Checklists**

## a) Sustainable Safety

Cycling is a vulnerable mode in traffic terms. Safety is at the heart of all good design. The designer should ensure that the Principles of Sustainable Safety have been applied to all schemes

The principles of Sustainable Safety were developed in 1992, and in the following years in the Netherlands. They underpin all road design and the adherence to those principles has contributed to the Netherlands leading record in road safety.

This manual subscribes to the principles of Sustainable Safety and has used them in the determination of content.

There are five principles as follows:



- Functionality
- Homogeneity
- Legibility
- Forgivingness
- Self-awareness

# Investment at Frascati Road





# Investment at Liffey – Bachelor's Walk



# Investment at Royal Canal Cycleway - Ashtown



# Investment at Dodder Bridge: Firhouse / Old Bawn



# Investment at College Green



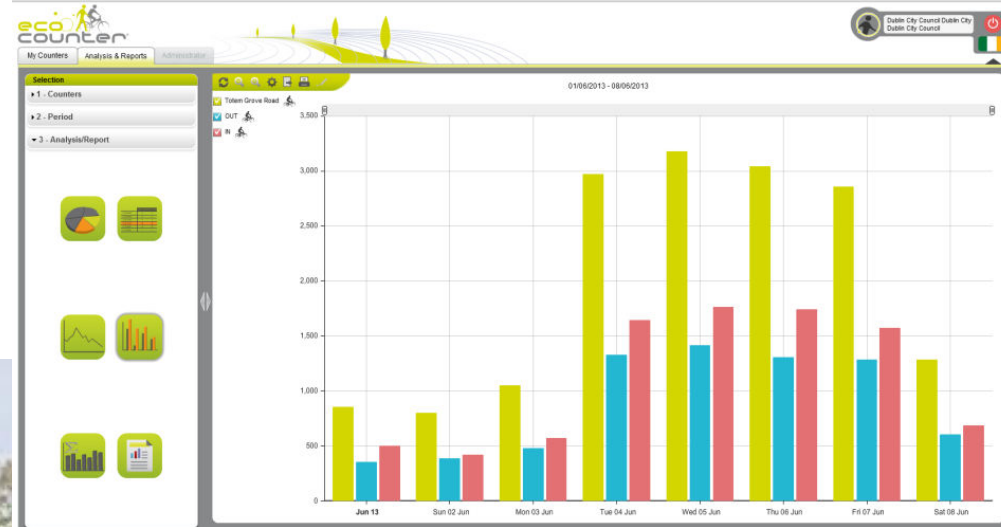
# Investment at Clontarf – East Coast Trail



# Investment in Cycle Parking – Drury Street



# Investment in Network Monitoring System



# Investment in Public Bikes Schemes





# Behavioural Change



smartertravel >>>  
>>> workplaces

smartertravel >>>  
>>> campus



# Building A Cycling Culture at Work and University



## Student Walking & Cycling Challenges

## Get Involved

## Success Stories

## Resources + Events

## Smart Moves

## Latest Campus News



## Drying Room opens in Institute of Technology Blanchardstown

Posted on 19/11/13 at 5:14

A drying room with wire mech lockers is now available for staff and students in the Institute of Technology Blanchardstown. The purpose of the mech lockers is to allow clothing of active commuters to dry while being kept in secure ...

[Read more](#)



## First Cycle Repair Station in NUI Maynooth

Posted on 19/11/13 at 4:26

NUI Maynooth is the first University in Ireland to install a cycle repair station on campus. Repair accessories and a foot pump have also been made available to staff and students at NUI Maynooth. For more information visit <http://campusservices.nuim.ie/traffic/news.shtml>

[Read more](#)



## NUI Maynooth announce Grants for Bikes for Students!

Posted on 19/11/13 at 4:22

NUI Maynooth is delighted to announce the Student Cycle to College Scheme (SCCS) initiative. NUI Maynooth will contribute €50 to any qualifying student purchasing a bicycle for travelling to college. This offer is being made available through revenue generated from ...

[Read more](#)

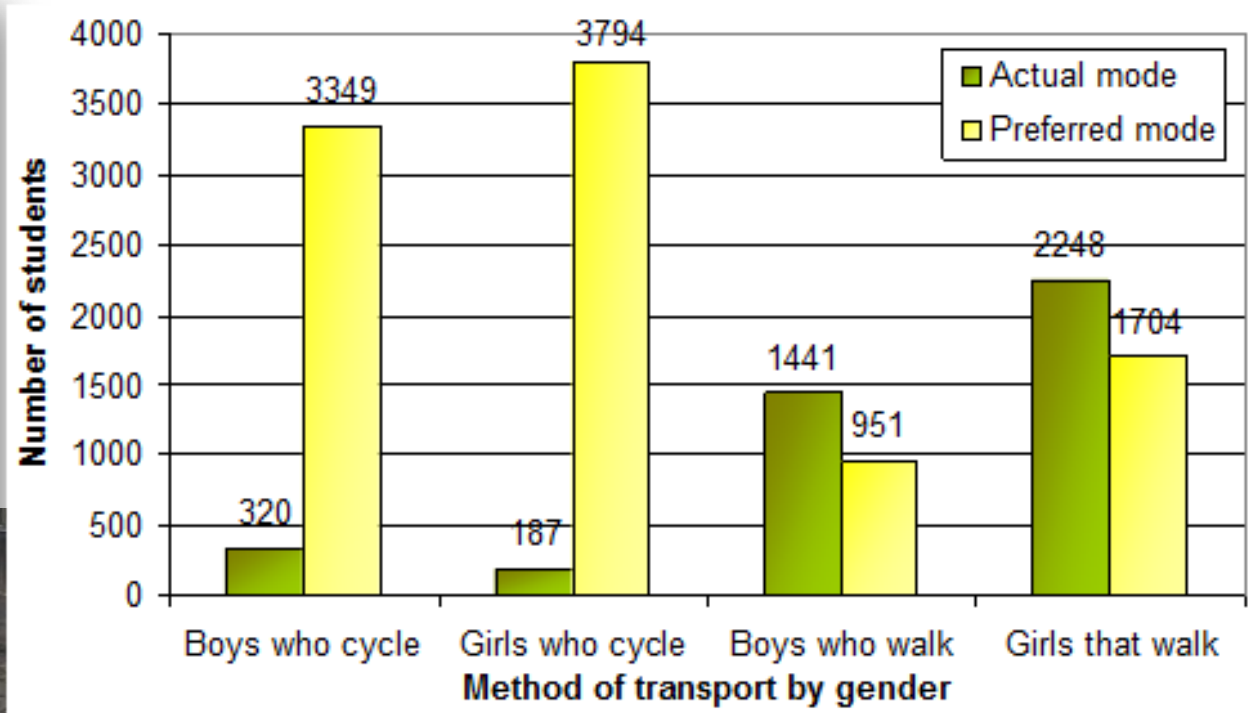
# Workplaces Facilitating Cycling



# Green Schools Travel



# Travel Resources for Post-Primary Schools





# Cycling Outcomes



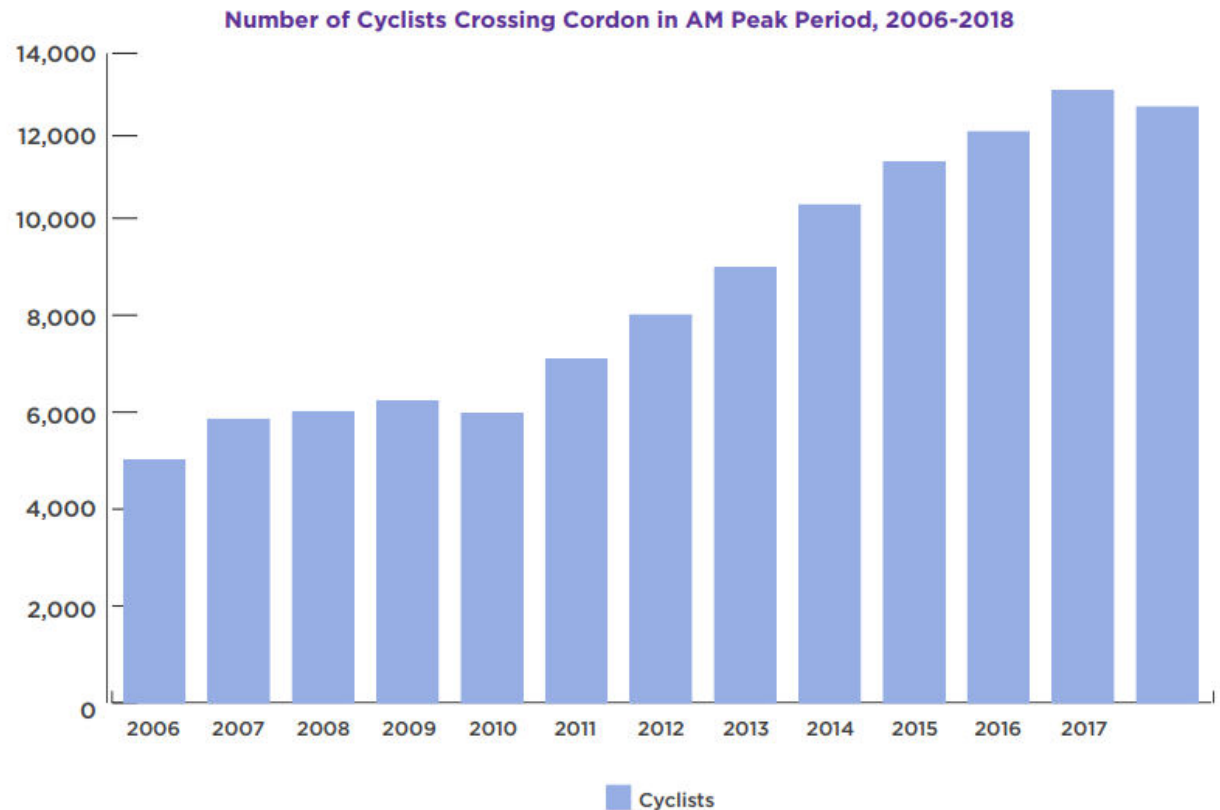
Anne Graham, Chief Executive Officer  
June 2019

# Cycling Is Now A Key Transport Mode



# Dublin City Canal Cordon

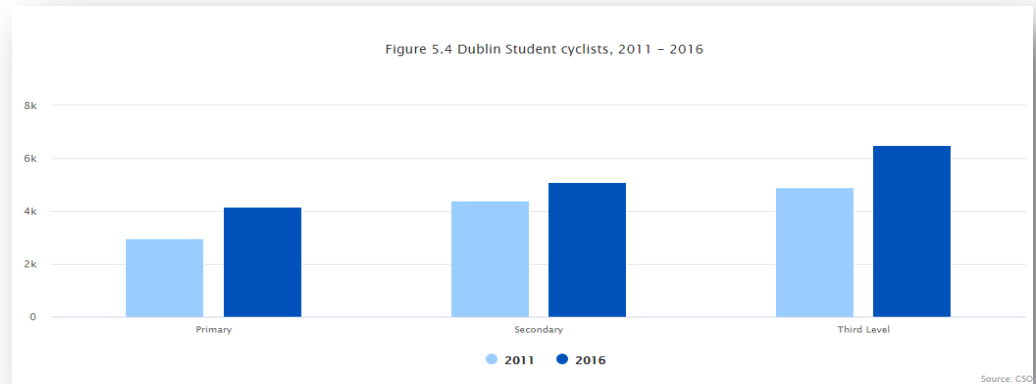
Cycling numbers have almost tripled in the period from Velo City 2005 to Velo City 2019





# Behavioural Change (see NTA stand)

Census 2016:  
There were 15,771 Dublin student cyclists in 2016, an increase of **28%** from 12,290 in 2011.



Parents Survey 2017:  
20% of those who changed mode, did so because of Green Schools Travel behavioural programme



# Dublin Cycle network plans

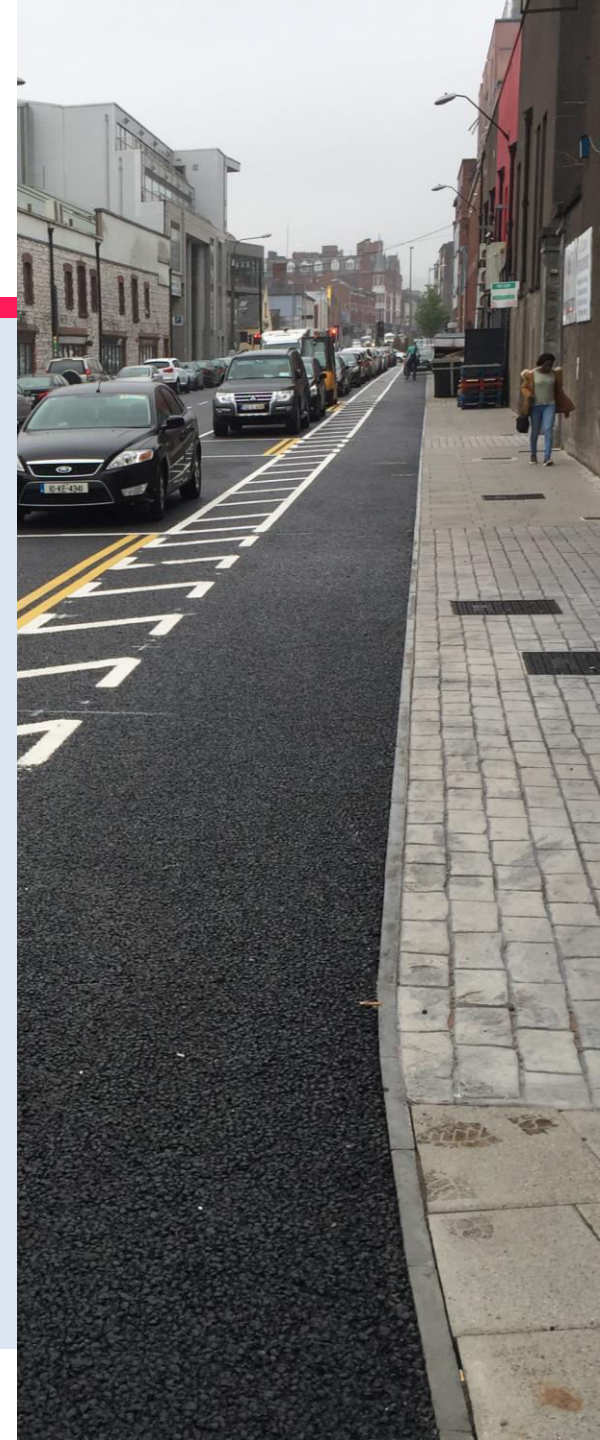


# Cycling Network Update

- Liffey Cycle Scheme presented to Dublin City Council by NTA
- Construction has commenced on Guild Street to Newcomen bridge section of Royal Canal Cycleway and contract about to be awarded for Newcomen to Cross Gunns bridge section
- NTA to set up new **Cycling office** to increase delivery rate of cycling infrastructure



# Segregation of Cyclists on Main Corridors - a key objective



# Final thoughts

- Ireland is on the cusp of a huge change in how we travel
- Strong political support to provide for more sustainable modes
- NTA expect to see this translated into more funding for cycling infrastructure
- NTA is up for the challenge of delivering our cycle network plans in partnership with Dublin City Council and other local authorities